



New Wharf Road, N1

£3,500 Per calendar month

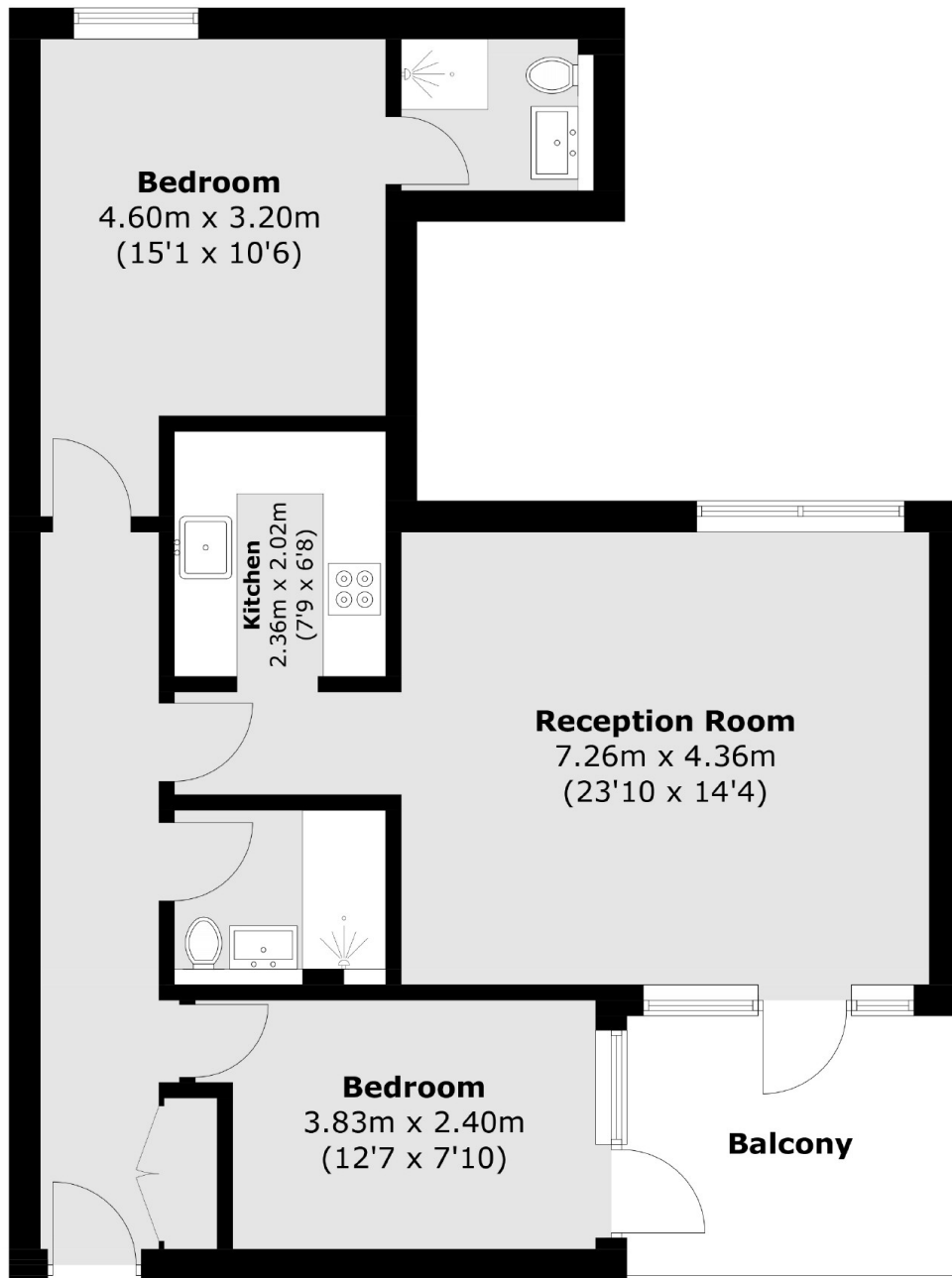
A recently refurbished two double bedroom home within a private gated development. There is a dressing room and en-suite to the master as well as a separate re-fitted kitchen and private terrace.

Marina One is located on the Regent's Canal within close proximity to King's Cross St Pancras and London's hottest new development in Coal Drops Yard.

Features

- Secure Gated Development
- Two Double Bedrooms
- Recently Refurbished
- Dressing Room & En-Suite
- Private Terrace
- Available Now

New Wharf Road,
London, N1



First Floor

Total area (approx.): 70.0 sq. m (753.5 sq. ft)
Balcony : 7.9 sq. m (85.0 sq. ft)

Dexters

Bloomsbury
55-56 Coram Street
London
WC1N 1HB
Lettings
020 7833 4488

Energy Rating: C. We aim to make our particulars both accurate and reliable. However they are not guaranteed; nor do they form part of an offer or contract. If you require clarification on any points then please contact us, especially if you're traveling some distance to view. Please note that appliances and heating systems have not been tested and therefore no warranties can be given as to their good working order.

 **RICS** | Regulated
Estate Agent
and Letting Agent

dexters.co.uk