



Albany Street, NW1

£375,000

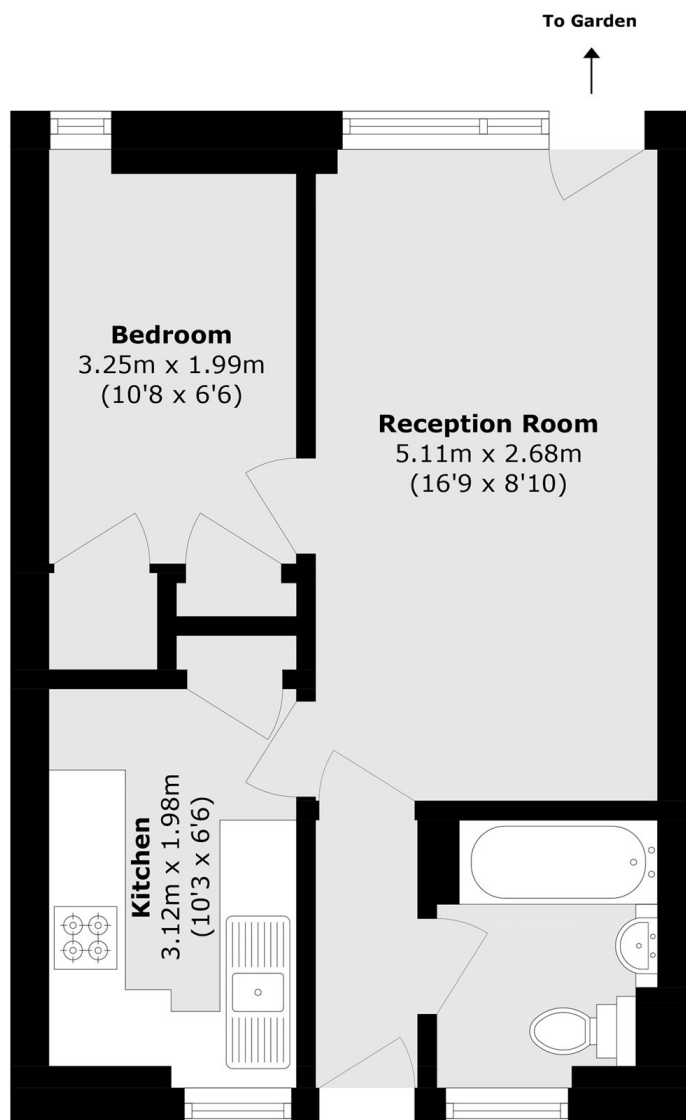
A well proportioned, one bedroom home with a separate kitchen and private garden. The property would make a perfect first home, London base or buy to let investment.

Albany Street is located less than half a mile from Regent's Park and is nearby no less than four underground stations as well as UCL and London Business School making this a perfect London base or investment.

Features

- One Double Bedroom
- Private Garden
- Good Condition
- Ground Floor
- Low Service Charge
- No Onward Chain

Albany Street, London, NW1



Total area (approx.): 35.1 sq. m (377.8 sq. ft)