



Bury Place, WC1A

£675,000

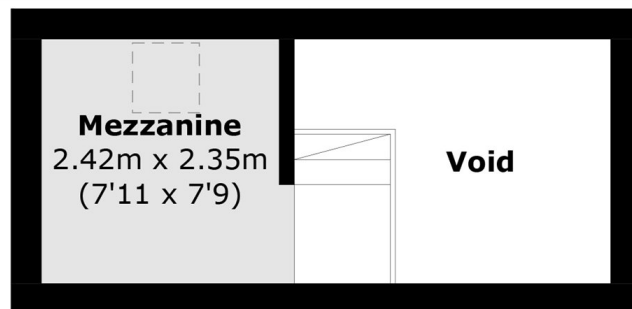
Set within an elegant Georgian building on Bury Place, this distinctive two-bedroom apartment features a thoughtfully designed layout, ideal for central London living. The accommodation includes two well-proportioned bedrooms, a bright and welcoming reception space, and a mezzanine level perfectly suited for use as a home office or study. High ceilings and expansive windows allow an abundance of natural light to flow throughout, creating a wonderful, homely, sense of space.

Located between Bloomsbury, Holborn, Covent Garden and Soho, the apartment is superbly positioned for both work and leisure. Excellent transport connections are close at hand, with Holborn, Tottenham Court Road, Russell Square and Goodge Street stations all within easy walking distance, alongside renowned universities such as UCL, LSE and SOAS.

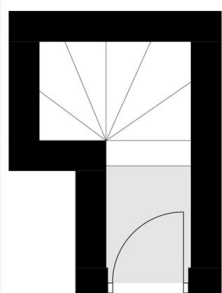
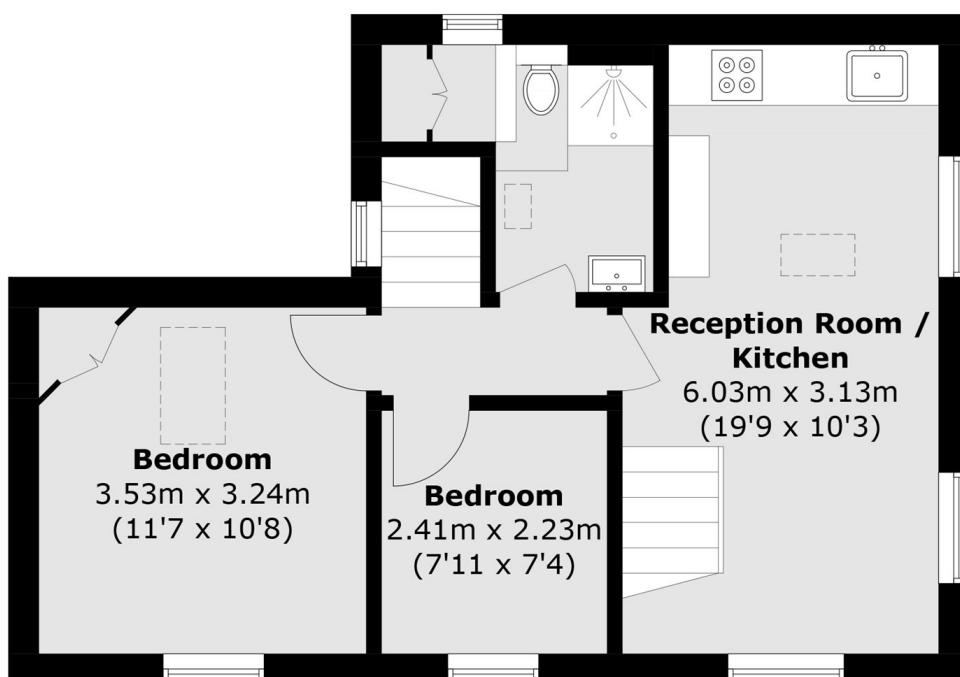
Features

- Mezzanine
- Easy Access To West End
- Small Private Block
- Close to UCL & LSE
- Leasehold Of 109 Years
- Service charge £1,365
- Ground rent £250
- Council Tax Camden Band D

Bury Place, London, WC1A



Second Floor



Ground Floor

First Floor

Total area (approx.): 54.7 sq. m (588.6 sq. ft)
(Excluding Void)