

Gray's Inn Road, WC1X

£550 Per week

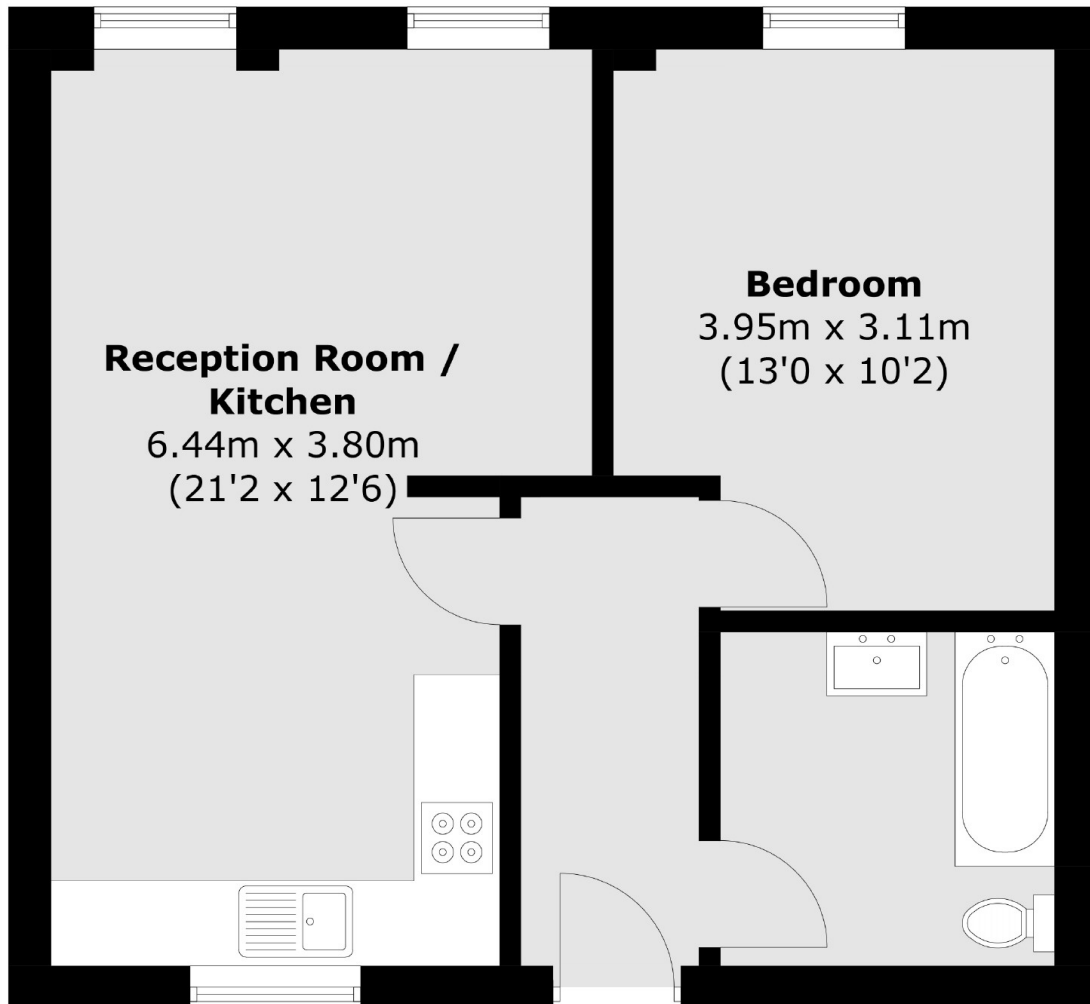
A stylish one bedroom apartment with a spacious open plan kitchen and reception with dual aspect windows. There is double bedroom with fitted storage, wooden flooring throughout and a contemporary bathroom.

Gray's Inn Road gives easy access to King's Cross underground and Euston and St Pancras overground stations. There is also an array of shops, bars and restaurants on your doorstep.

Features

Refurbished Flat
One Bedroom
Third Floor
Lift Access
Wooden Flooring
Great Location

Gray's Inn Road,
London, WC1X



Total area (approx.): 45.6 sq. m (490.8 sq. ft)

Dexters

Bloomsbury
55-56 Coram Street
London
WC1N 1HB
Lettings
020 7833 4488

Energy Rating: C. We aim to make our particulars both accurate and reliable. However they are not guaranteed; nor do they form part of an offer or contract. If you require clarification on any points then please contact us, especially if you're traveling some distance to view. Please note that appliances and heating systems have not been tested and therefore no warranties can be given as to their good working order.

 **RICS** | Regulated
Estate Agent
and Letting Agent

[dexters.co.uk](https://www.dexters.co.uk)