



Hand Axe Yard, WC1X

£5,000 Per calendar month

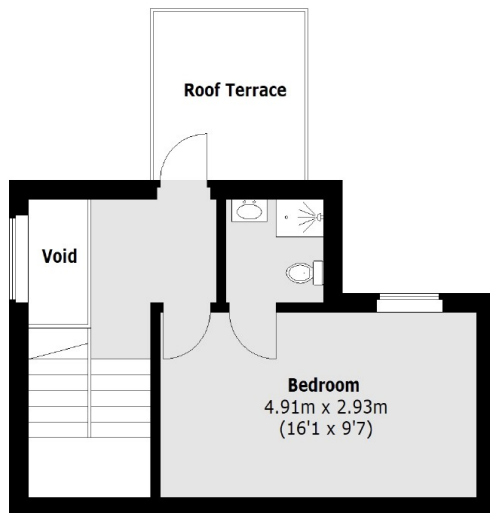
Set over three floors, the house has a large open plan modern kitchen/reception, with floor to ceiling windows and outside space. With three double bedrooms, two bathrooms and an additional WC on the ground floor, this property has plenty of storage throughout.

Hand Axe Yard is located off Gray's Inn Road giving you easy access to King's Cross underground, Euston and St Pancras overground stations. There is also an array of shops, bars and restaurants on your doorstep.

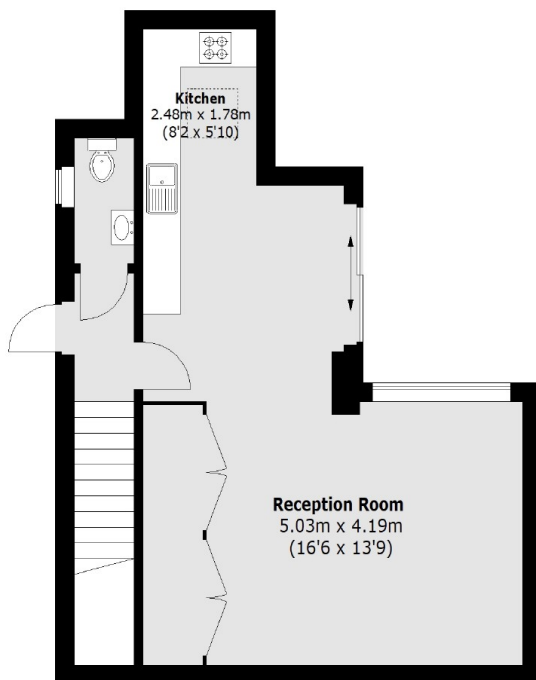
Features

- Three Bedrooms
- Two Bathrooms plus WC
- Modern Development
- Concierge & Gym
- Top Floor Terrace
- Natural Light

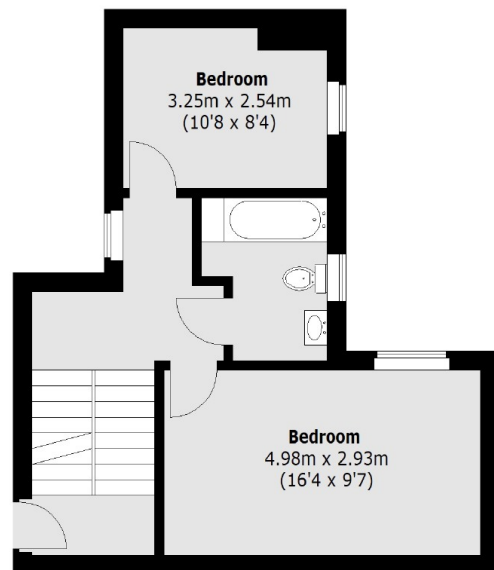
Hand Axe Yard, London, WC1X



First Floor



Lower Ground Floor



Ground Floor

Total area (approx.): 119.5 sq. m (1286.1 Sq. ft)
(Excluding Void)

Roof Terrace: 6.5 sq. m (69.9 Sq. ft)

Dexters

Bloomsbury
55-56 Coram Street
London
WC1N 1HB

Lettings
020 7833 4488

Energy Rating: . We aim to make our particulars both accurate and reliable. However they are not guaranteed; nor do they form part of an offer or contract. If you require clarification on any points then please contact us, especially if you're traveling some distance to view. Please note that appliances and heating systems have not been tested and therefore no warranties can be given as to their good working order.

 **RICS** | Regulated
Estate Agent
and Letting Agent

dexters.co.uk