

Old Gloucester Street, WC1N

£650 Per week

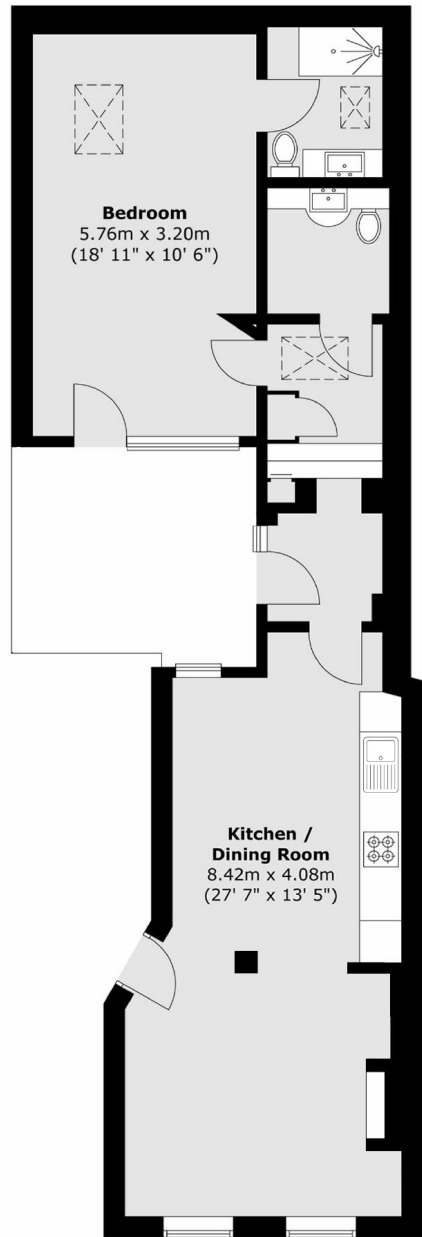
An exceptionally large and unique one bedroom property on the ground floor of this period conversion in Bloomsbury. The property offers a spacious open plan kitchen living room, tiled flooring throughout and high ceilings.

Old Gloucester Street is located a short walk from Holborn and Russell Square tube station, ideal for proximity to UCL, Kings College and LSE universities.

Features

One Bedroom
Modern
Spacious
Great Location
Transport Links
High Ceilings

Old Gloucester Street, London, WC1N



Total area (approx.) : 62.5 sq. m (673 sq. ft)

Dexters

Bloomsbury
55-56 Coram Street
London
WC1N 1HB
Lettings
020 7833 4488

Energy Rating: D. We aim to make our particulars both accurate and reliable. However they are not guaranteed; nor do they form part of an offer or contract. If you require clarification on any points then please contact us, especially if you're traveling some distance to view. Please note that appliances and heating systems have not been tested and therefore no warranties can be given as to their good working order.

 **RICS** | Regulated
Estate Agent
and Letting Agent

[dexters.co.uk](https://www.dexters.co.uk)