



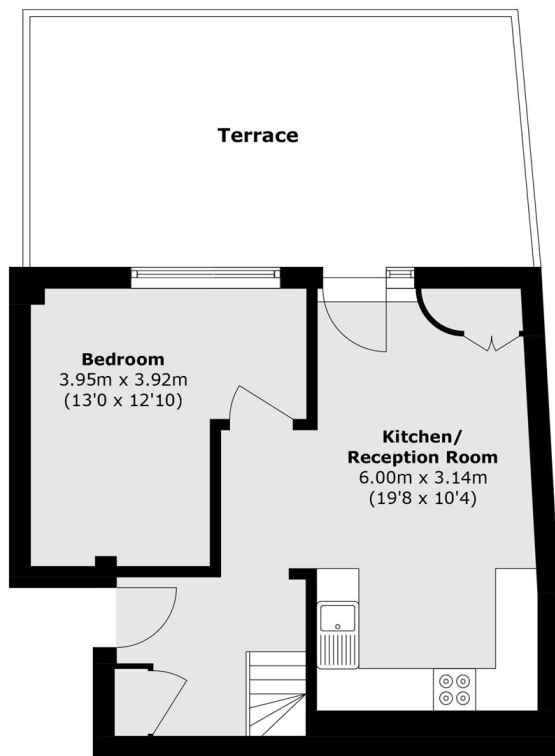
Caledonian Road, N1

£950,000

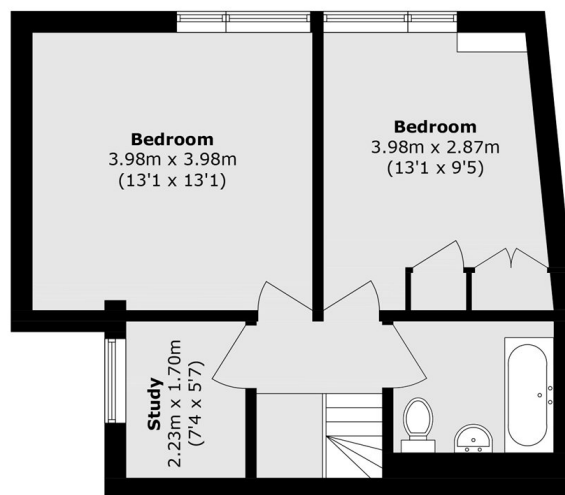
Located across the ground and first floors, the accommodation comprises an open-plan kitchen/living area, three double bedrooms, a study, a family bathroom, and a large private terrace overlooking Regent's Canal. The property also benefits from private off-street parking.

Features

Caledonian Road, London, N1



Ground Floor



First Floor

Total area (approx.): 85.2 sq. m (917.0 sq. ft)
Terrace area (approx.): 25 sq. m (269.1 sq. ft)