



**Red Lion Square, WC1R**  
**£1,000,000**

**Dexters**



## Red Lion Square, WC1R

A recently refurbished, period two bedroom apartment in Halsey House, finished to an exceptionally high standard. Benefits include a large open plan living area providing natural lighting, ample storage and integrated appliances.

Located on one of London's historic square's and in close proximity to London's most glamorous shopping, dining and financial districts. Holborn tube station is just a short walk away providing quick transport links via the Central and Piccadilly lines.

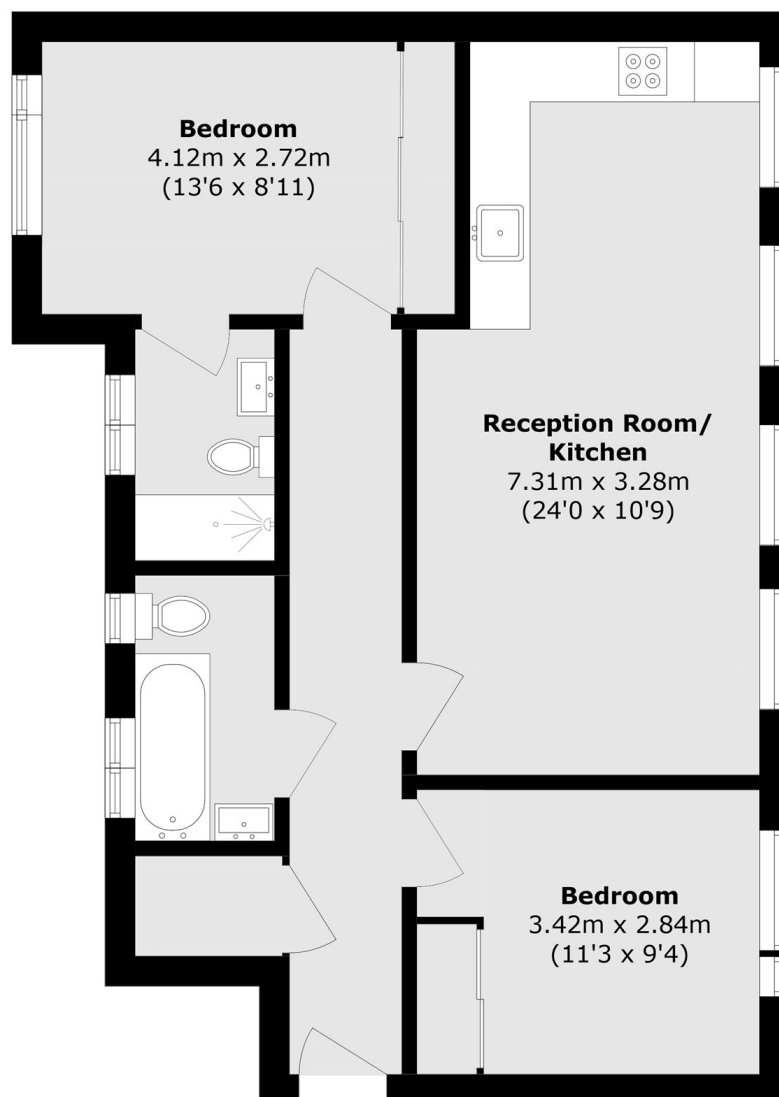
### Features

- Two Double Bedrooms
- Period Conversion
- Opposite Red Lion Square
- Parking Permit
- Excellent Condition
- Underfloor Heating





# Red Lion Square, London, WC1R



Total area (approx.): 64.9 sq. m (698.5 sq. ft)