



Madeira Street, E14

£350,000

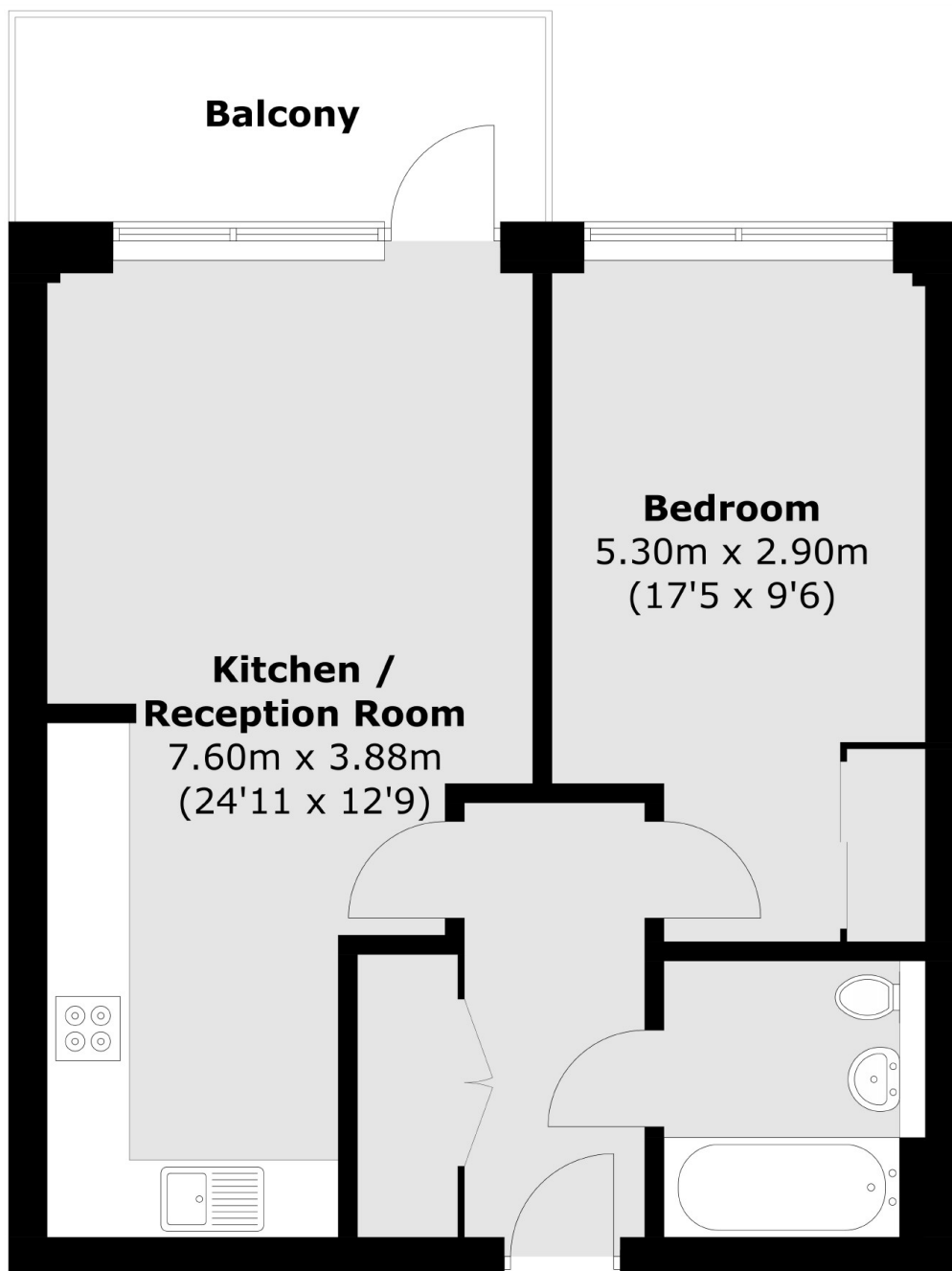
Welcome to this home in the vibrant heart of E14. Boasting a resident's gym, a spacious roof terrace, a day porter, and a private balcony, this property offers both luxury and convenience.

Lamington Heights is ideally situated just moments from Langdon Park DLR, with Canary Wharf nearby offering a wide range of shops, restaurants, cafés, and bars.

Features

- EWS1 Compliant
- Private Balcony
- Day Porter
- Residents Gym
- Roof Terrace
- 560 Square Feet

Madeira Street, London, E14



Total area (approx.): 52.1 sq. m (560.8 sq. ft)
Balcony : 6.5 sq. m (70.0 sq. ft)

Dexters

Canary Wharf
39 Westferry Road
London
E14 8JH
Sales
020 7517 1199

Energy Rating: B. We aim to make our particulars both accurate and reliable. However they are not guaranteed; nor do they form part of an offer or contract. If you require clarification on any points then please contact us, especially if you're traveling some distance to view. Please note that appliances and heating systems have not been tested and therefore no warranties can be given as to their good working order.

 **RICS** | Regulated
Estate Agent
and Letting Agent

[dexters.co.uk](https://www.dexters.co.uk)