



Albert Road, E16

£280,000

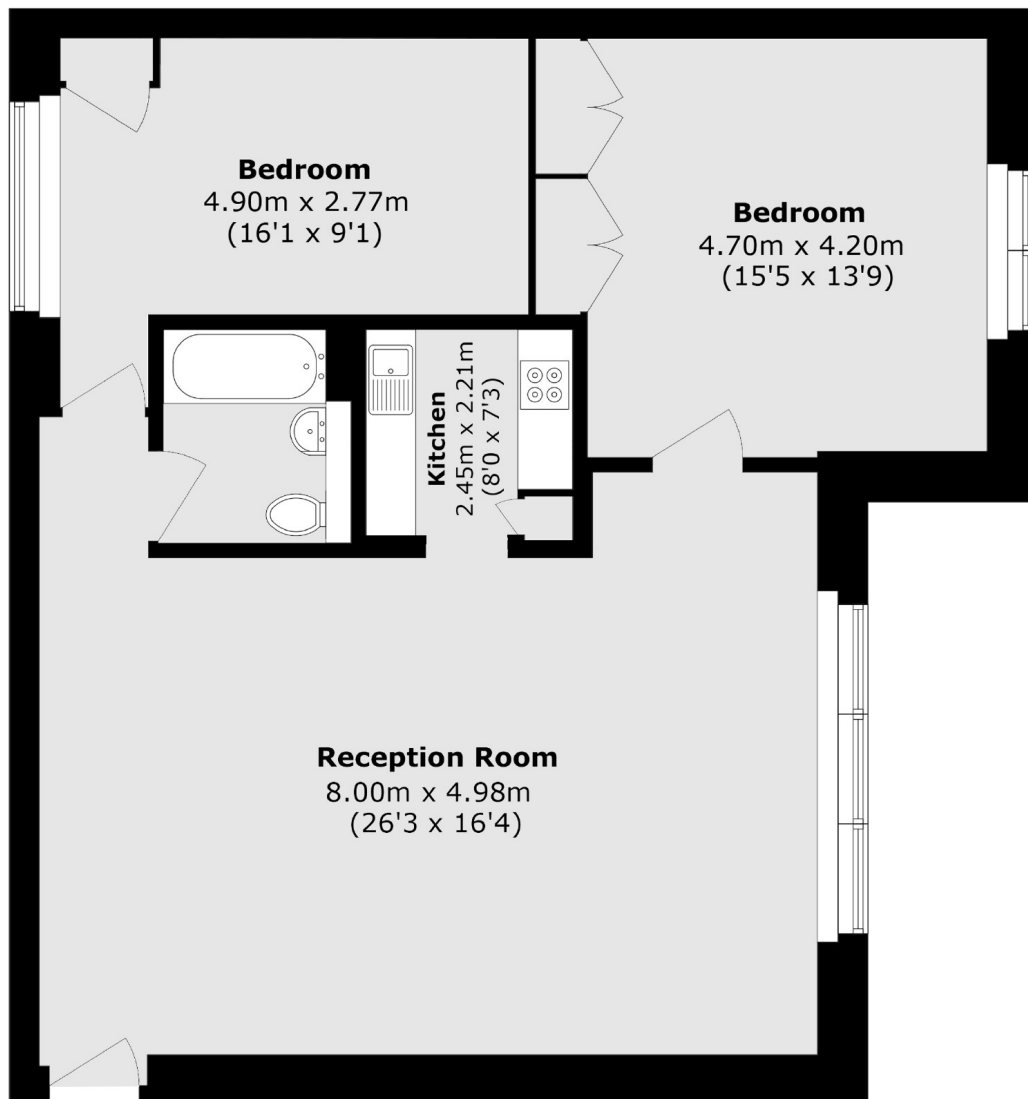
Offered to the market chain-free is this well-proportioned two-bedroom home, benefiting from allocated parking and a secure entry system.

Albert Road is ideally located just 0.2 miles from King George V DLR station, offering excellent transport links across the City. The flat is also just a two-minute walk from Victoria Park.

Features

- Allocated Parking
- 974 Square Feet
- Secure Entry System
- Moments From Tube Station
- Chain Free
- Two Double Bedrooms

Albert Road,
London, E16



Second Floor

Total area (approx.): 90.5 sq. m (974.1 sq. ft)

Dexters

Canary Wharf
39 Westferry Road
London
E14 8JH
Sales
020 7517 1199

Energy Rating: B. We aim to make our particulars both accurate and reliable. However they are not guaranteed; nor do they form part of an offer or contract. If you require clarification on any points then please contact us, especially if you're traveling some distance to view. Please note that appliances and heating systems have not been tested and therefore no warranties can be given as to their good working order.

RICS | Regulated
Estate Agent
and Letting Agent

dexters.co.uk