



## Orchard Place, E14

£1,037 Per week

This modern three-bedroom, two-bathroom townhouse is located in the popular Goodluck Hope development. The property offers approximately 1,741 sqft of internal space and is well suited to families or professionals. Arranged over several levels, the home features a large open-plan living and dining area with a fully fitted contemporary kitchen and integrated appliances.

The property includes both a balcony and a terrace, providing useful outdoor space. Residents have access to a 24-hour concierge, on-site security, a gym, swimming pool, spa, and membership to the exclusive Residents 1595 Club. The townhouse is conveniently located approximately 0.4 miles from Canning Town Underground Station and East India DLR, offering quick links to Canary Wharf and the City.

### Features

- Contemporary Townhouse
- Three Double Bedrooms
- Two Bathrooms + Guest WC
- Approx. 1,741 sqft
- Private Terrace & Balcony
- On-Site Resident Facilities

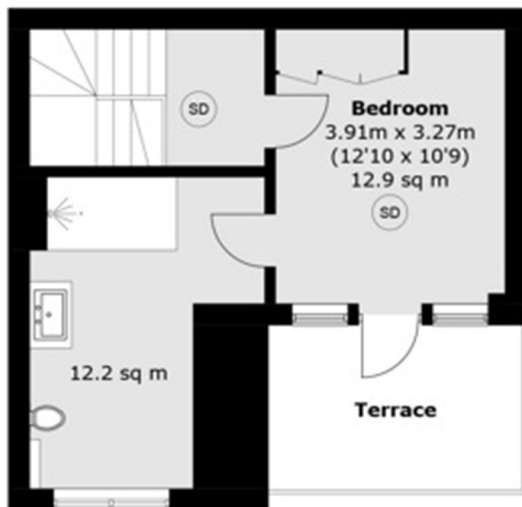


**Orchard Place, E14**

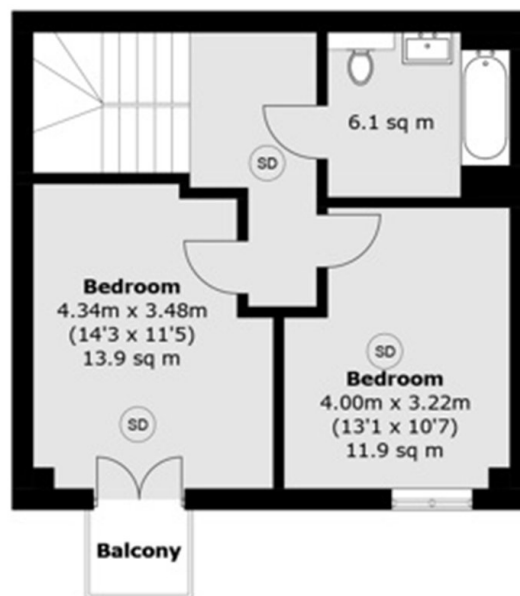




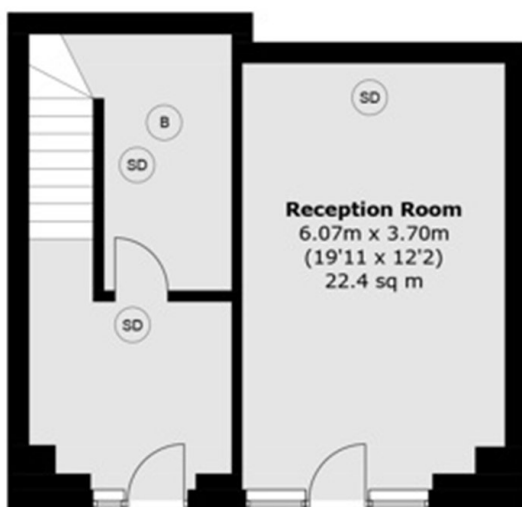
# Orchard Place, London, E14



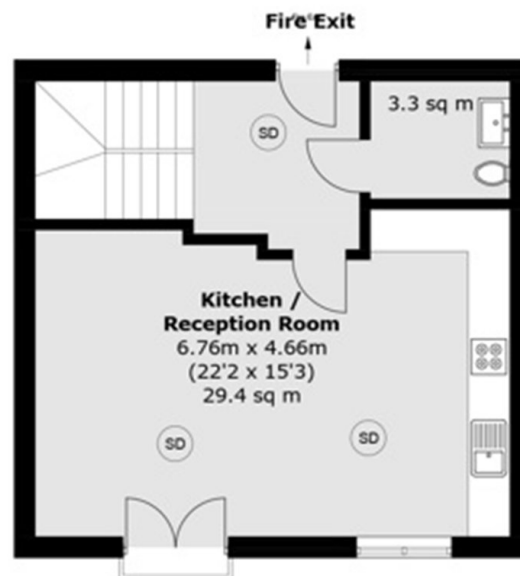
**Third Floor**



**Second Floor**



**Ground Floor**



**First Floor**

Total area (approx.): 162.9 sq. m (1,753.4 sq. ft)  
Terrace / Balcony: 10.2 sq. m (109.8 sq. ft)