



Madeira Street, E14

£350,000

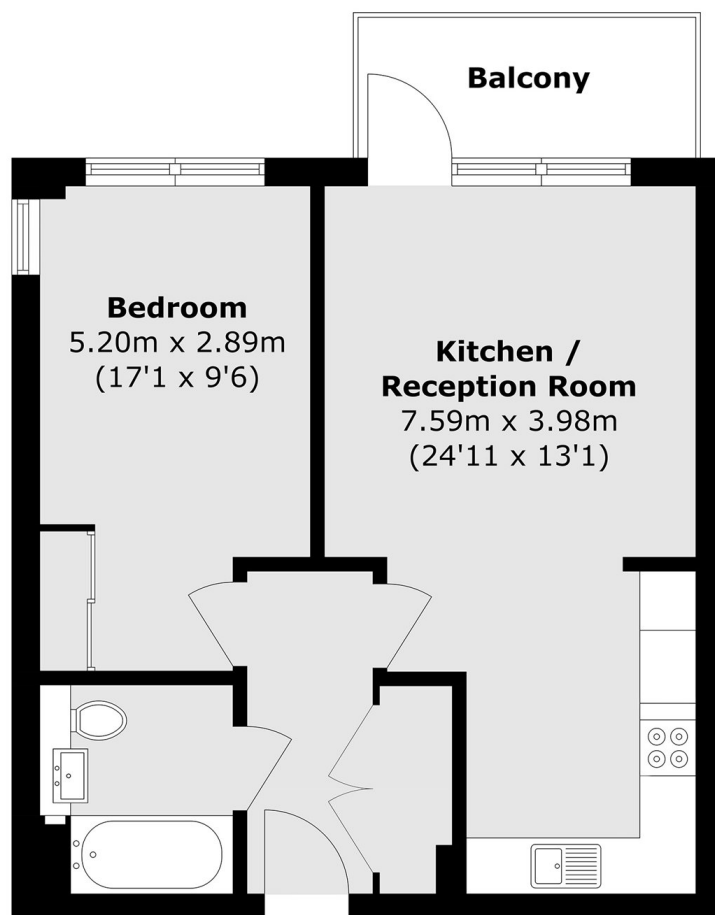
Set within the desirable Chorley Court development, this charming one-bedroom home offers a private balcony, water softener day porter, roof terrace and access to a residents' gym.

Chorley Court is ideally situated just moments from Langdon Park DLR Station, which provides excellent links across the City.

Features

- 574 Square Feet
- EWS1 Compliant
- Private Balcony
- Modern Throughout
- Roof Terrace
- Residents Gym

Madeira Street, London, E14



Total area (approx.): 53.4 sq. m (574.8 sq. ft)

Balcony area (approx.): 5.4 sq. m (58.7 sq. ft)