



Annabel Close, E14

£450 Per week

A large two bedroom apartment on the second floor of this purpose built development. This bright apartment has an open plan reception room with wooden flooring, ample storage and a private balcony.

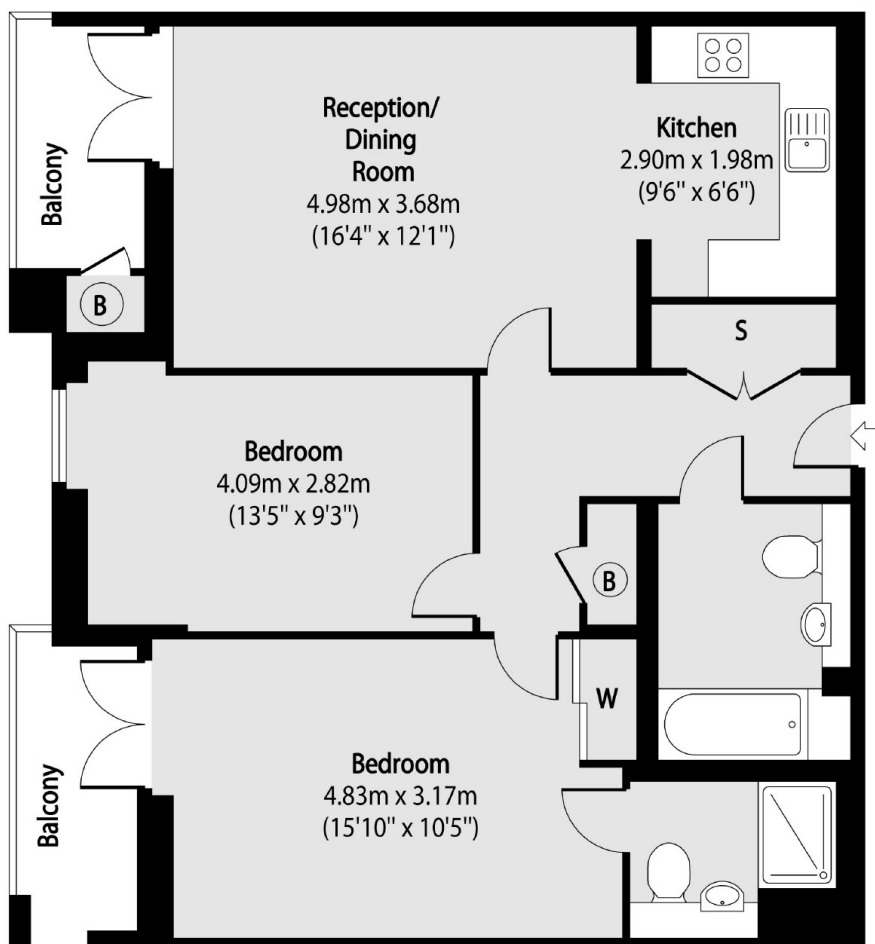
Shepherd Court is perfectly located for professionals working in Canary Wharf, just over a mile to the popular Big Easy restaurant and the Jubilee shopping mall.

Features

- Two Bedrooms
- Two Bathrooms
- Open Plan
- Two Balconies
- Third Floor
- Wooden Flooring

Annabel Close, London, E14

Second Floor



Total area (approx): 72.56 sq m (781 sq. ft)

Balcony Total area (approx): 7.71 sq m (83 sq. ft)

Dexters

Canary Wharf
39 Westferry Road
London
E14 8JH
Lettings
0207 517 1190

Energy Rating: A. We aim to make our particulars both accurate and reliable. However they are not guaranteed; nor do they form part of an offer or contract. If you require clarification on any points then please contact us, especially if you're traveling some distance to view. Please note that appliances and heating systems have not been tested and therefore no warranties can be given as to their good working order.

 **RICS** | Regulated
Estate Agent
and Letting Agent

[dexters.co.uk](https://www.dexters.co.uk)