



East Ferry Road, E14

£499,950

Located on the ninth floor and offering 580 Sq.Ft of ample living space is this modern one bedroom home moments away from Canary Wharf. Features to include open plan reception room, private double width balcony, concierge service and residents gym.

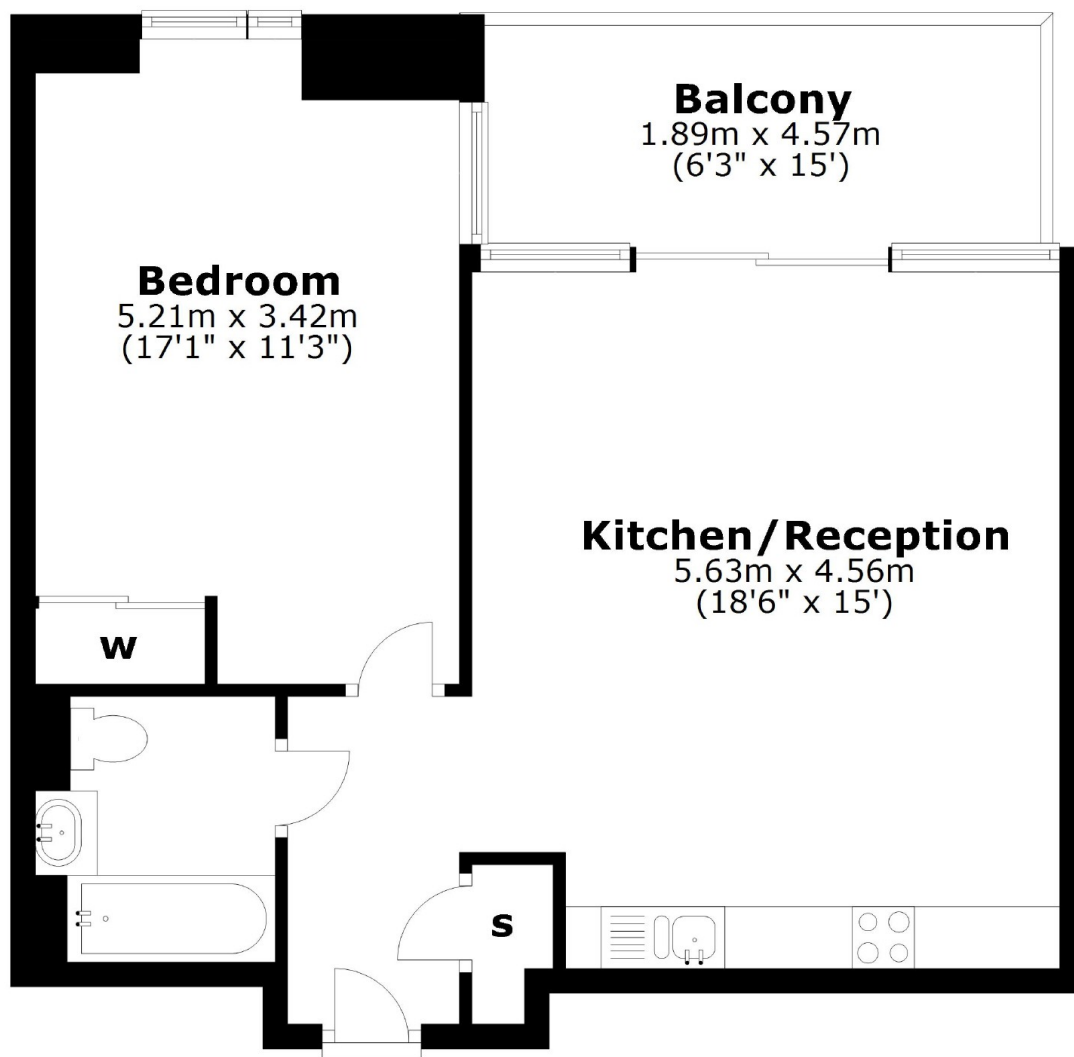
Heritage Tower is under a quarter of a mile from Crossharbour DLR Station and under a mile from the centre of Canary Wharf which both offer good transport links to The City. Canary Wharf also offers a selection of restaurants, bars and Waitrose supermarket as well as the shopping centre.

Features

Ninth Floor
Private Balcony
Concierge Service
Residents Gym
No Onward Chain
580 sq.ft

East Ferry Road,
London, E14

Ninth Floor



Total area: approx. 53.7 sq. metres (578.5 sq. feet)