



Lyell Street, E14

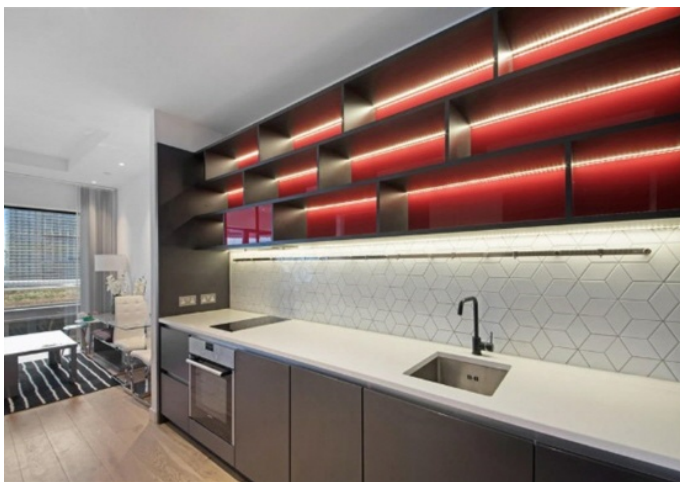
£415 Per week

A studio apartment located on a high floor with an open plan reception and private balcony. The development benefits from on-site gym, swimming pool and concierge

London City Island is a modern development within walking distance of the shops, bars and restaurants of Canning Town and Canary Wharf.

Features

- Studio Apartment
- Higher Floor
- Wood Floors
- Built-In Storage
- On-Site Concierge
- Resident Facilities



Dexters

Canary Wharf East
39 Westferry Road
London
E14 8JH
Lettings
020 7590 9550

Energy Rating: B. We aim to make our particulars both accurate and reliable. However they are not guaranteed; nor do they form part of an offer or contract. If you require clarification on any points then please contact us, especially if you're traveling some distance to view. Please note that appliances and heating systems have not been tested and therefore no warranties can be given as to their good working order.

 **RICS** | Regulated
Estate Agent
and Letting Agent

[dexters.co.uk](https://www.dexters.co.uk)