



Maud Street, E16

£315,000

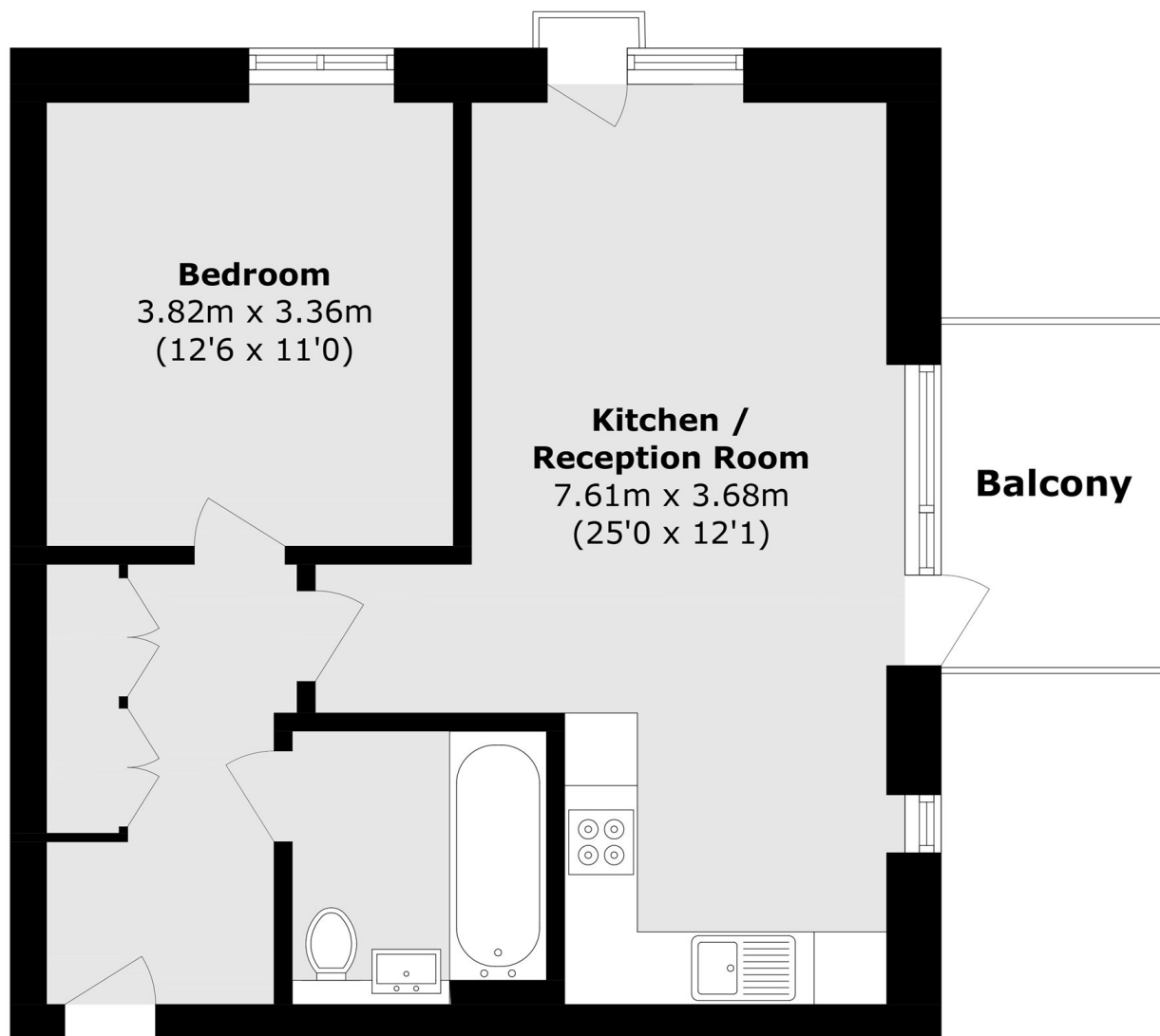
This one bedroom apartment is situated on the 11th floor and enjoys dual-aspect views in the popular Canning Town area. The property benefits from a private balcony, floor-to-ceiling windows, an open-plan reception room, and wooden flooring throughout. The apartment is offered with no onward chain.

Rathbone Market is ideally located for access to Canning Town Underground and DLR stations, offering excellent transport links to Canary Wharf and the City. The local area also benefits from a wide selection of restaurants, bars, and supermarkets.

Features

- Dual Aspect Views
- Private Balcony
- Open Plan Reception
- Secure Entry Phone System
- Wooden Flooring
- No Onward Chain

Maud Street, London, E16



Total area (approx.): 53.9 sq. m (580.1 sq. ft)

Balcony area (approx.): 5.4 sq. m (58.1 sq. ft)