



Stainsby Road, E14

£525,000

Modern two bedroom apartment with a dual aspect open plan kitchen and living room leading onto a south-west facing balcony. The flat is situated next to Bartlett Park and a short walk to local amenities.

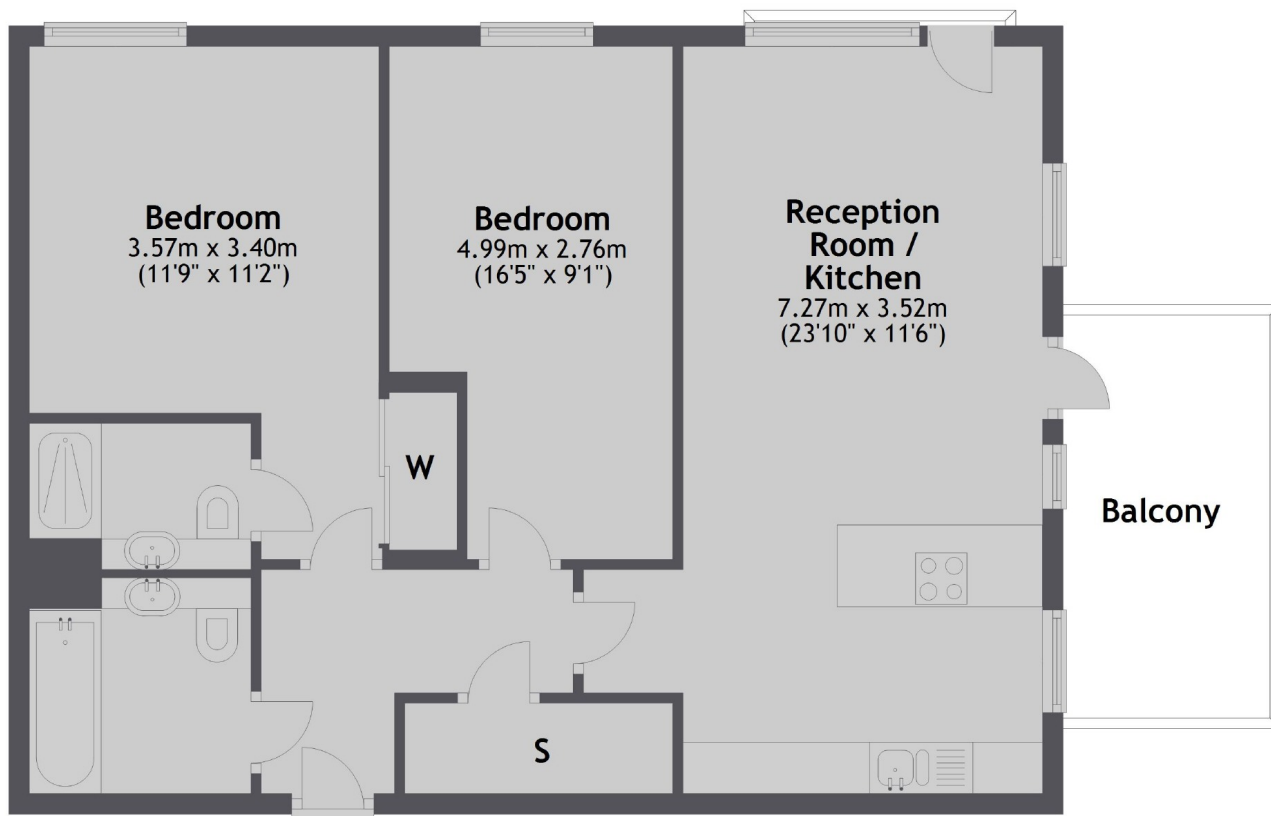
Clubhouse Apartments is just 0.4 miles from Westferry Road DLR Station which offers good links to the City and Canary Wharf and 0.5 miles from Langdon Park DLR connecting to Westfields Startford.

Features

- Two Bedrooms
- Two Bathrooms
- Open Planing Kitchen/Living
- 8th Floor with Lift
- Balcony
- Cycle Storage

Stainsby Road, London, E14

Eighth Floor



Total area: approx. 71.7 sq. metres (772.0 sq. feet)