



## Boardwalk Place, E14

**£576** Per week

A well-presented two bedroom apartment set within a dockside development in Canary Wharf. Boasting two bathrooms, a private balcony and a quiet residential setting.

Located within walking distance (0.5 miles) to central Canary Wharf's desirable stations, mall and restaurants. These include the DLR, Elizabeth & Jubilee Lines, ensuring ease of access into the City & Heathrow Airport.

### Features

- Two Large Bedrooms
- Two Bathrooms
- Dockside Development
- Private Balcony
- On-Site Concierge
- Quiet Residential Setting



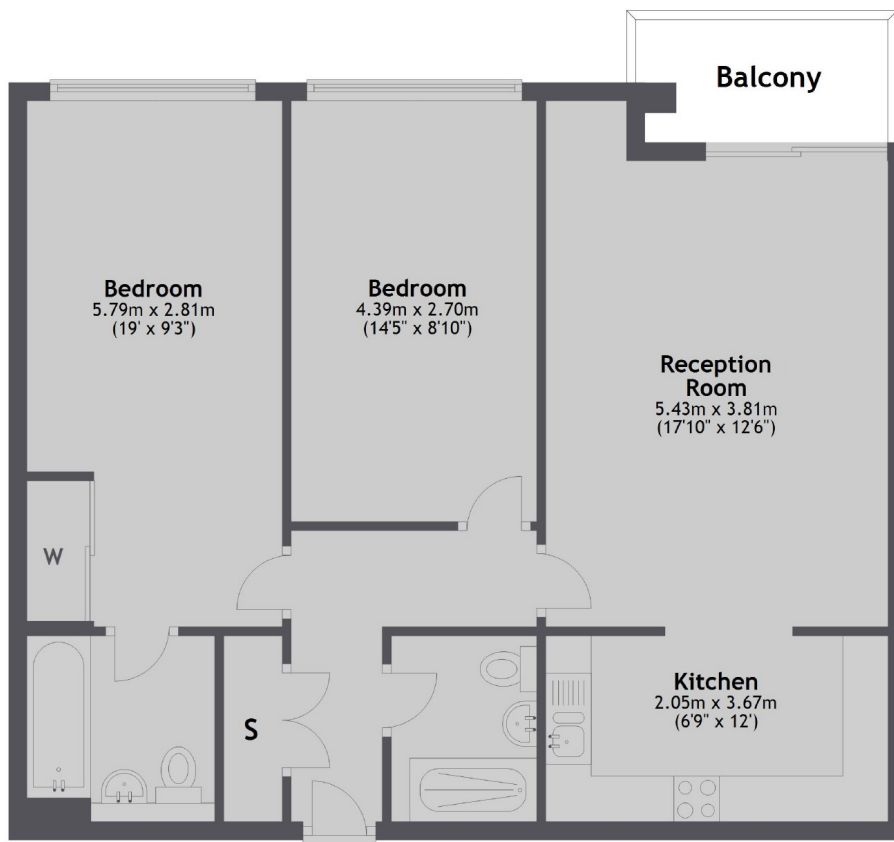
**Boardwalk Place, E14**





# Boardwalk Place, London, E14

## Fourth Floor



Total area: approx. 72.4 sq. metres (779.4 sq. feet)