



Lyell Street, E14

£650,000

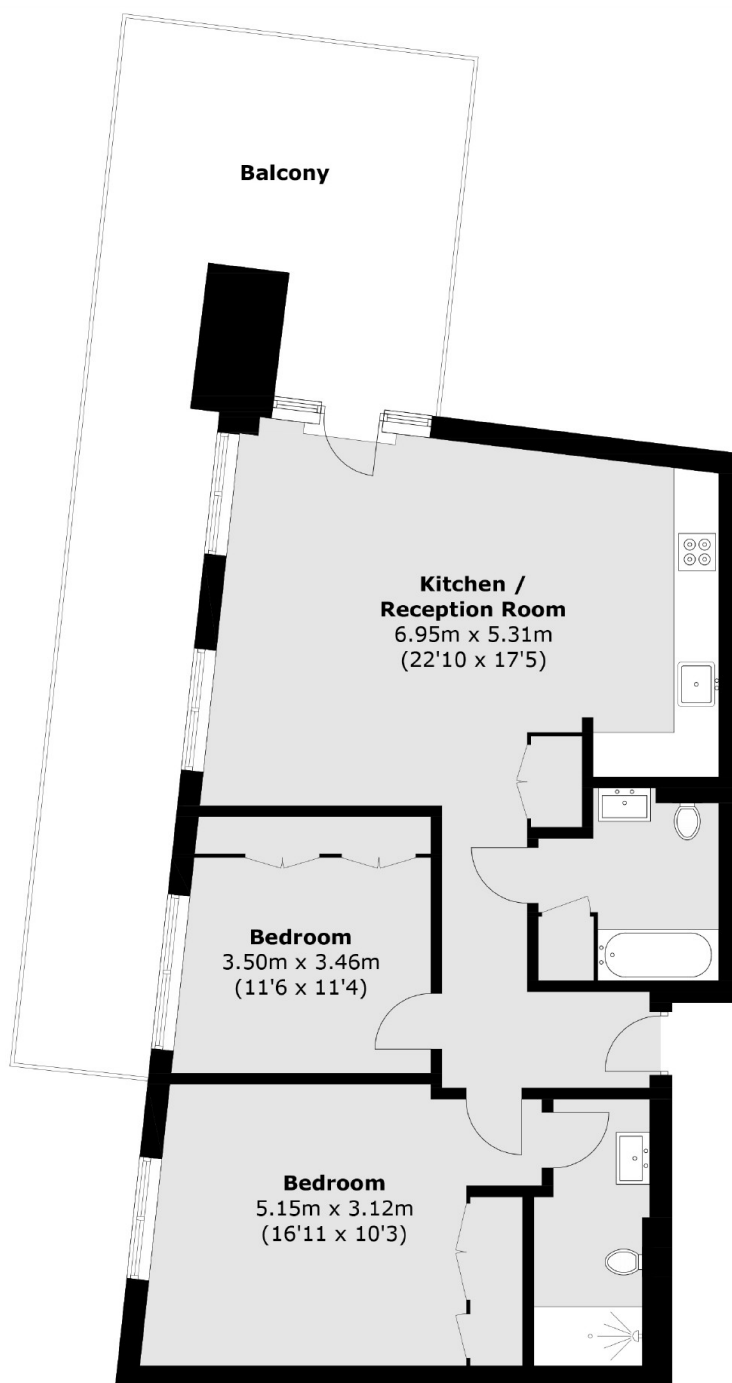
Offering 861 square feet of ample living space is this two bedroom home situated in the sought after London City Island development. The property has an open plan reception and dining area, modern integrated kitchen and an impressive 407 square feet terrace.

London City Island is a modern development within walking distance of the shops, bars and restaurants of Canning Town and Canary Wharf.

Features

- 861 Square Feet
- Concierge
- Residents Facilities
- Large Private Terrace
- Two Bedrooms
- Two Bathrooms

Lyell Street, London, E14



Total area (approx.): 80.0 sq. m (861.1 sq. ft)
Balcony area (approx.): 37.9 sq. m (407.9 sq. ft)

Dexters

Canary Wharf
39 Westferry Road
London
E14 8JH
Sales
020 7517 1199

Energy Rating: B. We aim to make our particulars both accurate and reliable. However they are not guaranteed; nor do they form part of an offer or contract. If you require clarification on any points then please contact us, especially if you're traveling some distance to view. Please note that appliances and heating systems have not been tested and therefore no warranties can be given as to their good working order.

 **RICS** | Regulated
Estate Agent
and Letting Agent

[dexters.co.uk](https://www.dexters.co.uk)