



## Fairmont Avenue, E14

**£519** Per week

A bright one bedroom apartment on a lower floor of this sought-after riverside development. The property has a separate kitchen, direct views of the Thames, and on-site resident facilities.

New Providence Wharf is moments from the shops, bars and restaurants of Canary Wharf, in addition to a wealth of transport links into the City. These include the DLR, Jubilee and Elizabeth Lines all within walking distance.

### Features

- Lower Floor Position
- Direct River Views
- One Double Bedroom
- Tastefully Furnished
- Private Balcony
- On-Site Resident Facilities



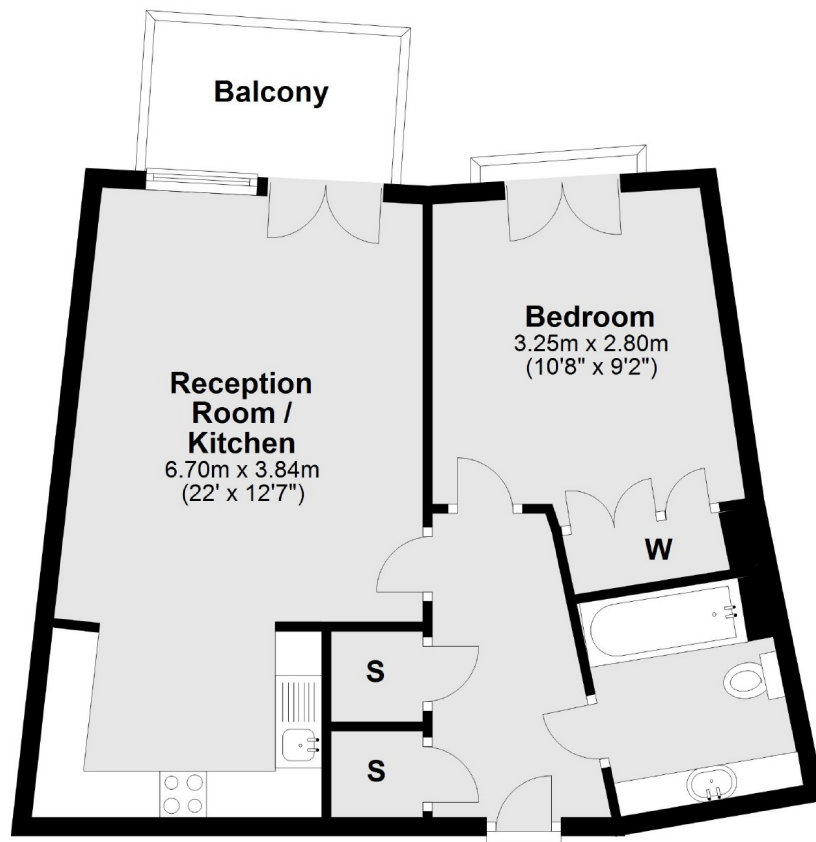
**Fairmont Avenue, E14**





# Fairmont Avenue, London, E14

## Third Floor



Total area: approx. 49.0 sq. metres (527.9 sq. feet)