



Fairmont Avenue, E14

£550,000

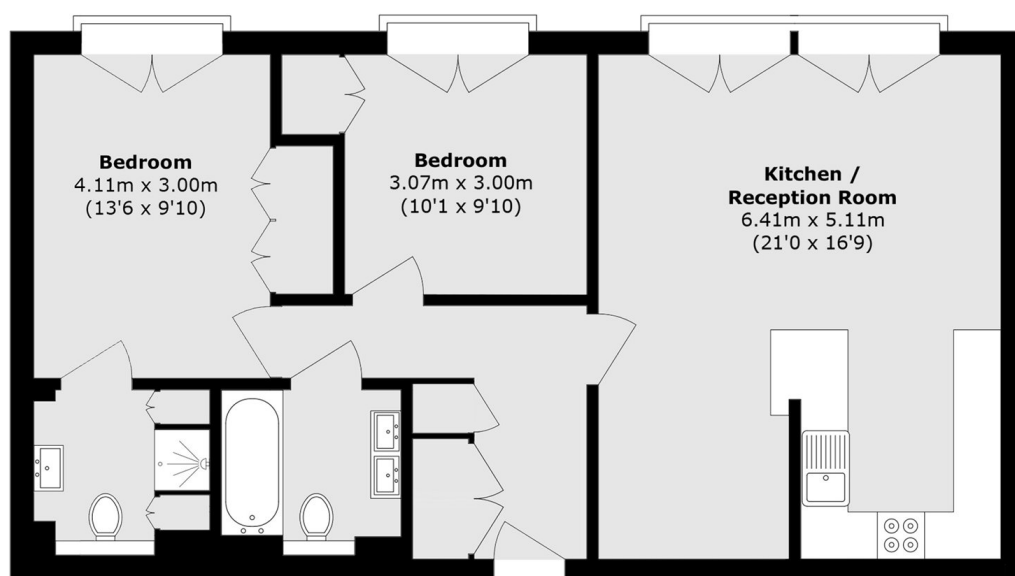
We are pleased to present this newly renovated two-bedroom apartment to the market, located within the sought-after New Providence Wharf development. The property benefits from river views, a concierge service, and access to a residents' gym

New Providence Wharf is just 0.2 miles from Blackwall DLR station, offering excellent transport links across the City.

Features

- River Facing
- Renovated Throughout
- Two Double Bedrooms
- Concierge Service
- Residents Gym
- Two Bathrooms

Fairmont Avenue, London, E14



Total area (approx.): 78. 7 sq. m (847.1 sq. ft)