



Mahindra Way, E6

£450,000

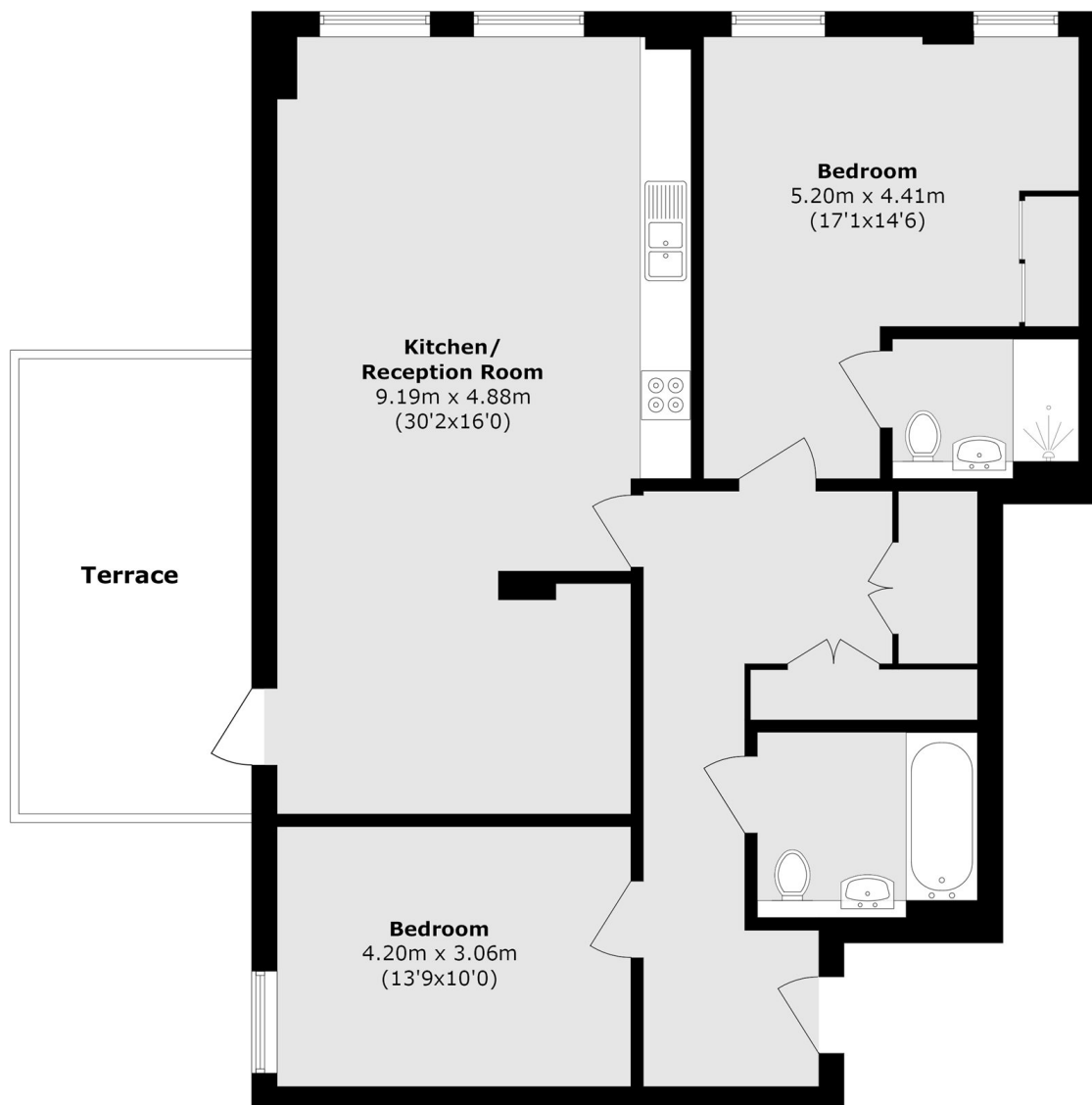
We are delighted to present this exceptionally large and well-presented two-bedroom home, located within the sought-after Mahindra Way development. The property offers 1,112 sq ft of internal accommodation and benefits from a private balcony, two bathrooms, access to a communal terrace, allocated parking, concierge service, and a residents' gym.

Situated on a quiet residential turning, this apartment is just a short distance from Beckton and Royal Albert DLR stations.

Features

- 1,122 Square Feet
- Private Balcony
- Allocated Parking
- Residents Gym
- Concierge Service
- Modern Throughout

Mahindra Way, London, E6



Total area (approx.): 104.3 sq. m (1122.6 sq. ft)
(Excluding Terrace)
Terrace area (approx.): 14.6 sq. m (158.0 sq. ft)