



Western Gateway, E16

£325,000

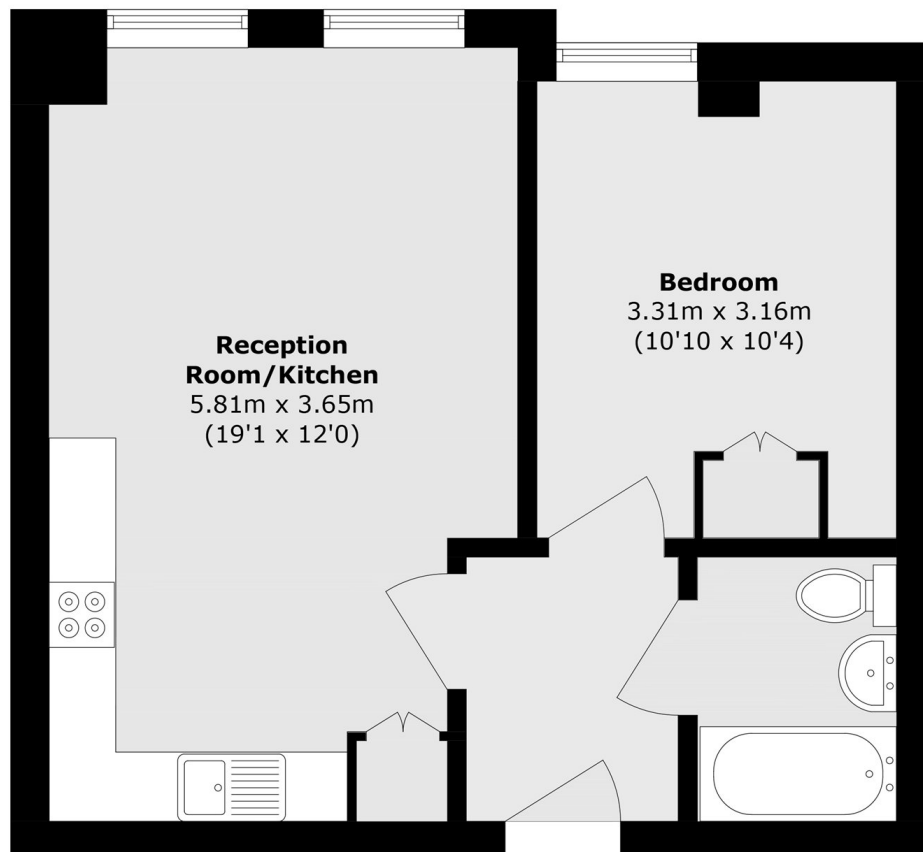
Offered to the market on a chain-free basis, this one-bedroom home is set within the sought-after Aegean Apartments development. The property features an open-plan reception area with integrated appliances, along with access to a concierge service and residents' gym.

Aegean Apartments is just 0.2 miles from Custom House station which offers transport via DLR as well the Elizabeth Line.

Features

- Chain Free
- Open Plan Reception
- Integrated Appliances
- Concierge Service
- Residents Gym
- Close To Station

Western Gateway, London, E16



Total area (approx.): 39.0 sq. m (419.7 sq. ft)