



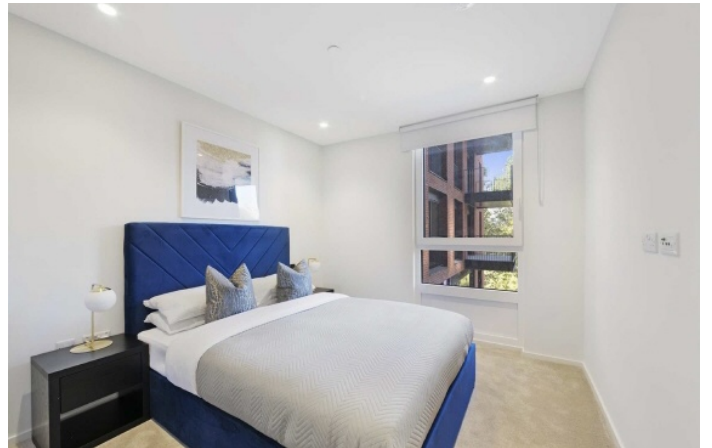
Hawser Lane, E14

£484 Per week

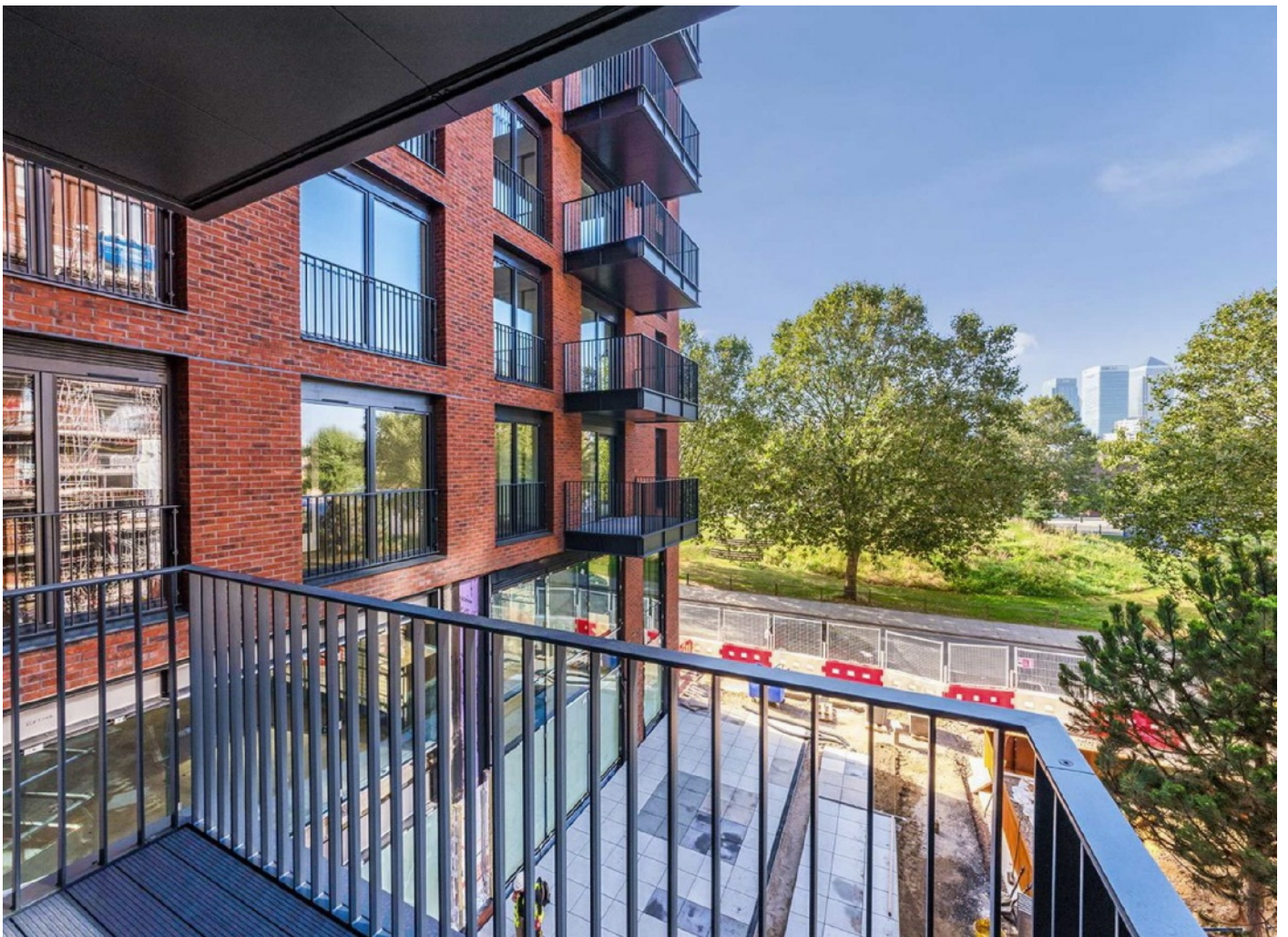
A one bedroom apartment in the recently built Curlew House, part of the highly sought after Poplar Riverside development, E14. The property benefits from an open plan living room, built-in storage and private balcony.

Poplar Riverside is located on the banks of the River Lea just over a mile from central Canary Wharf. Canning Town Jubilee Line station is also within a brief walk. Residents of Poplar Riverside enjoy an on-site gymnasium & concierge service.

Features



Hawser Lane, E14



Hawser Lane, London, E14

Dexters

Canary Wharf East
39 Westferry Road
London
E14 8JH
Lettings
020 7590 9550

Energy Rating: B. We aim to make our particulars both accurate and reliable. However they are not guaranteed; nor do they form part of an offer or contract. If you require clarification on any points then please contact us, especially if you're traveling some distance to view. Please note that appliances and heating systems have not been tested and therefore no warranties can be given as to their good working order.



dexters.co.uk