



## Fairmont Avenue, E14

**£623** Per week

A large two bedroom apartment on a lower floor of this sought after development. This river facing home has floor to ceiling windows, wooden flooring, a private balcony and on-site resident facilities.

New Providence Wharf is moments from the shops, bars and restaurants of Canary Wharf, in addition to a wealth of transports links, including the DLR, Jubilee and Elizabeth Lines.

### Features

- Riverside Development
- Lower Floor
- Two Double Bedrooms
- Two Bathrooms
- Furnished
- On-Site Resident Facilities



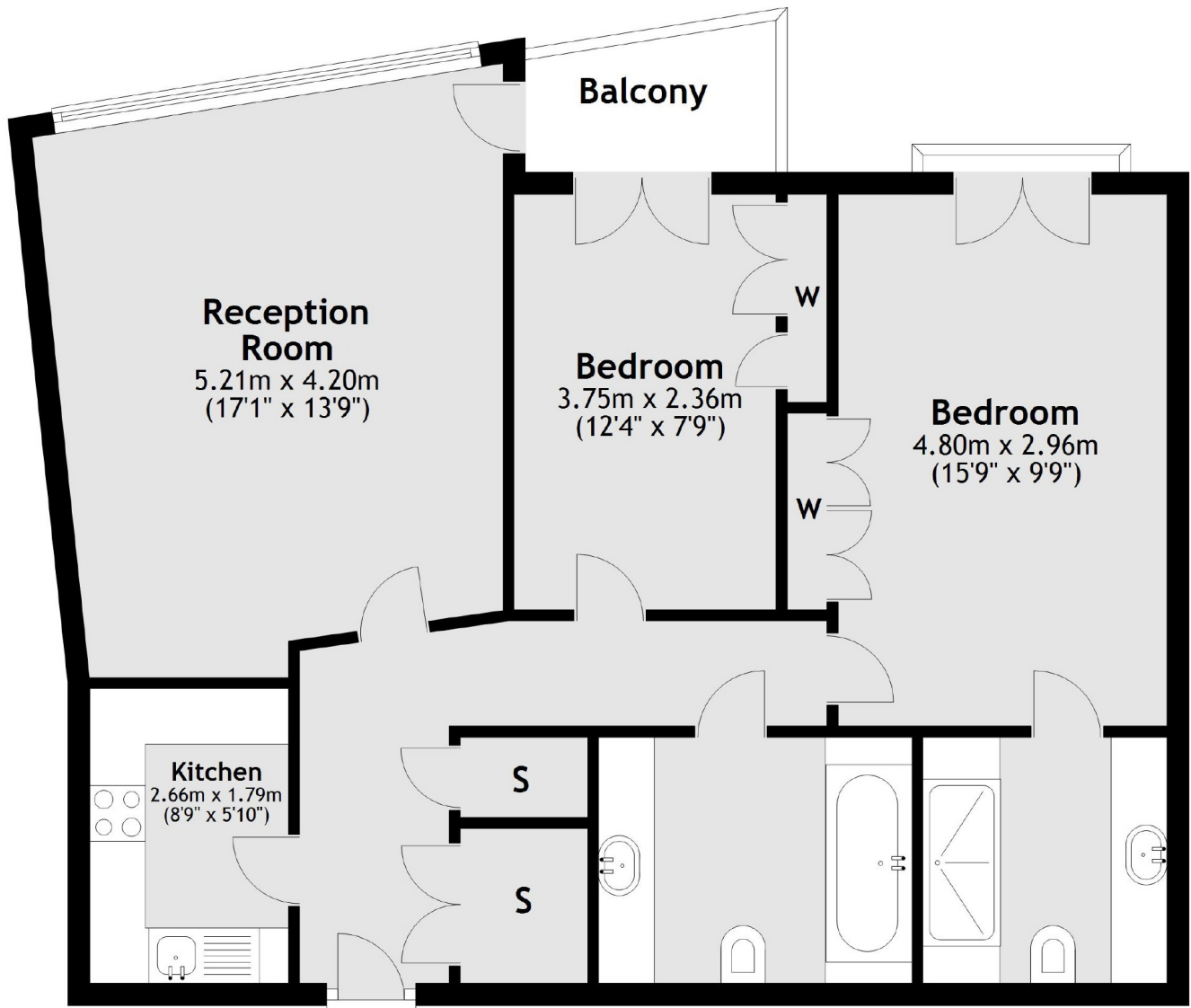
**Fairmont Avenue, E14**





# Fairmont Avenue, London, E14

## Third Floor



Total area: approx. 73.7 sq. metres (793.0 sq. feet)