

Principal Tower, EC2A

£3,500 Per calendar month

A one double bedroom apartment in the highly sought after Principal Tower. This property has fantastic views of both the City and Canary Wharf, wooden floors throughout, open plan kitchen and a marble bathroom.

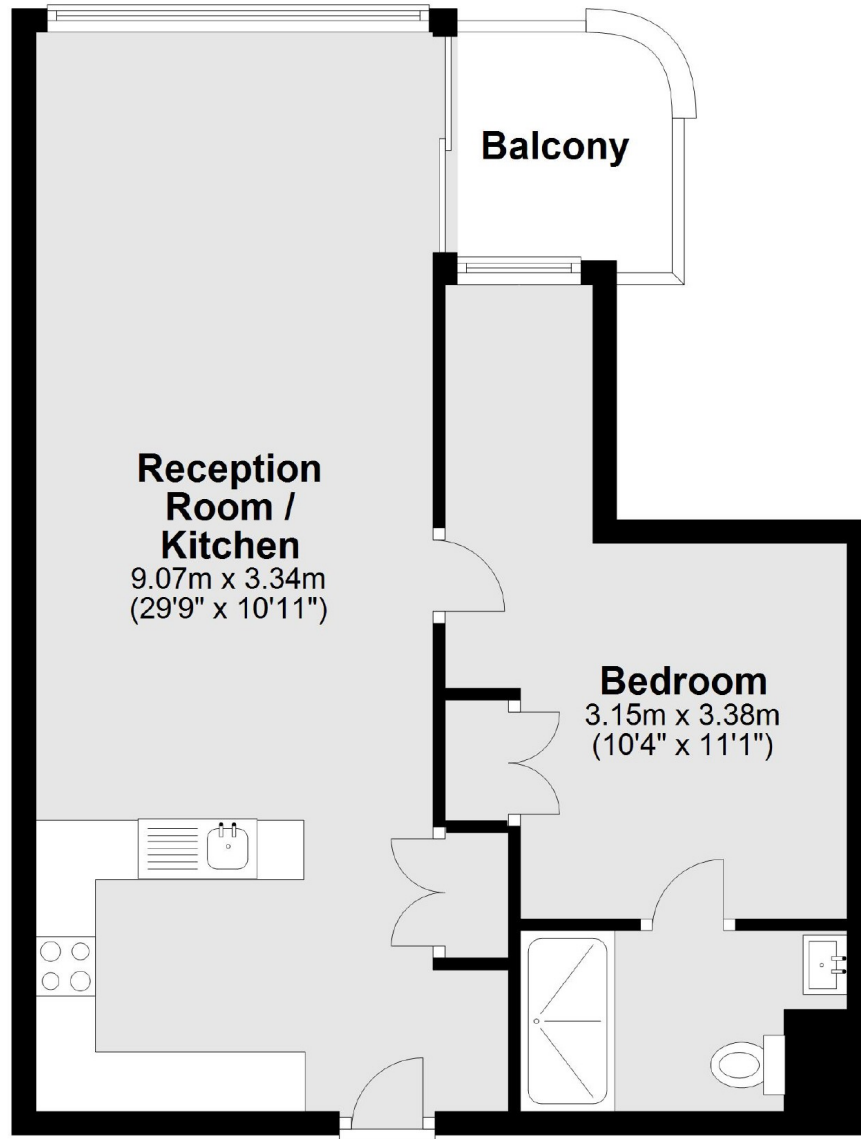
Principal Tower is in the perfect location located just moments from Liverpool Street Station and Shoreditch High Street Overground, giving you easy access throughout London and close to all amenities.

Features

- 16th Floor
- One Double Bedroom
- Central Location
- Residents Gym & Swimming
- Residents Pool
- 24 Hour Concierge

Principal Tower, London, EC2A

16th Floor



Main area: Approx. 49.8 sq. metres (535.7 sq. feet)
Plus balconies, approx. 3.6 sq. metres (38.7 sq. feet)