



## Boyd Street, E1

£3,000 Per calendar month

A fantastic two double bedroom apartment with exposed brickwork throughout. The apartment's principal feature is a dual-aspect, generously proportioned open-plan reception room and kitchen.

Victoria Mills is located about a quarter mile from Aldgate East, and less than half a mile from both Shadwell and Tower Gateway Stations.

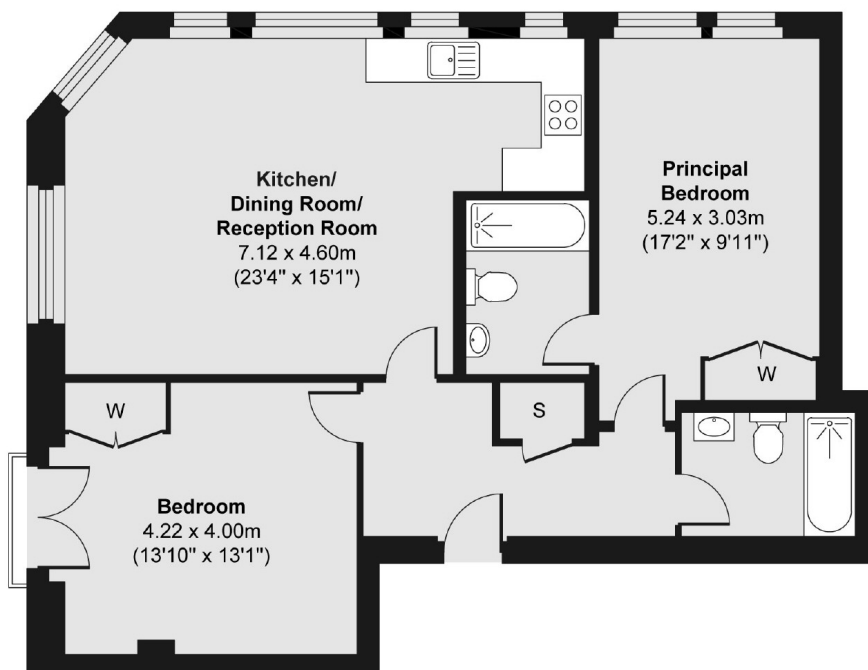
### Features

- Two Double Bedrooms
- Two Bathrooms
- Porter
- Exposed Brickwork
- Dual-Aspect
- Furnished



# Boyd Street, London, E1

Third Floor



Total area (approx.) 77.80 sq. m (837 sq. ft)