

Thrawl Street, E1

£2,800 Per calendar month

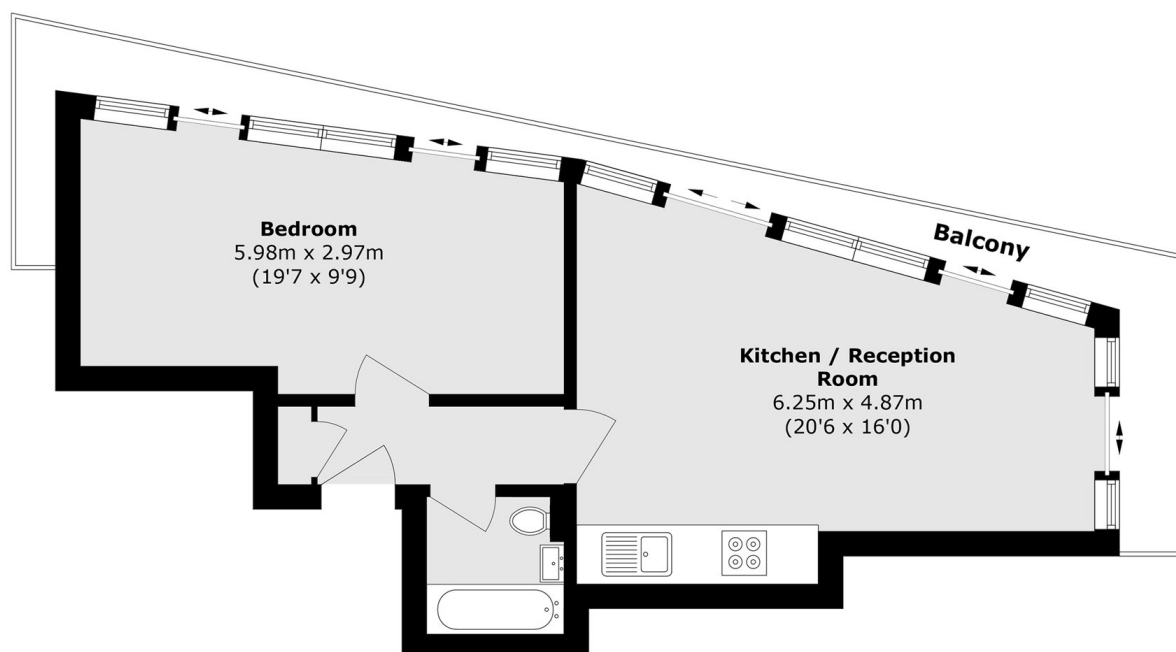
This one bedroom apartment is full of natural light and has its own private balcony, which has amazing views of the City. The property is neutrally decorated throughout and would suit a single or professional couple.

Thrawl Street is located close to Spitalfields Market and Shoreditch, and is moments away from Brick Lane where you can find a wide range of boutique shops and cafés.

Features

- One Double Bedroom
- Private Balcony
- Open Plan
- Central Location
- Furnished
- Spitalfields Market

Thrawl Street, London, E1



Total area (approx.): 46.7 sq. m (502.7 sq. ft)

Balcony area (approx.): 12.4 sq. m (133.5 sq. ft)