



## Hooper Street, E1

£3,000 Per calendar month

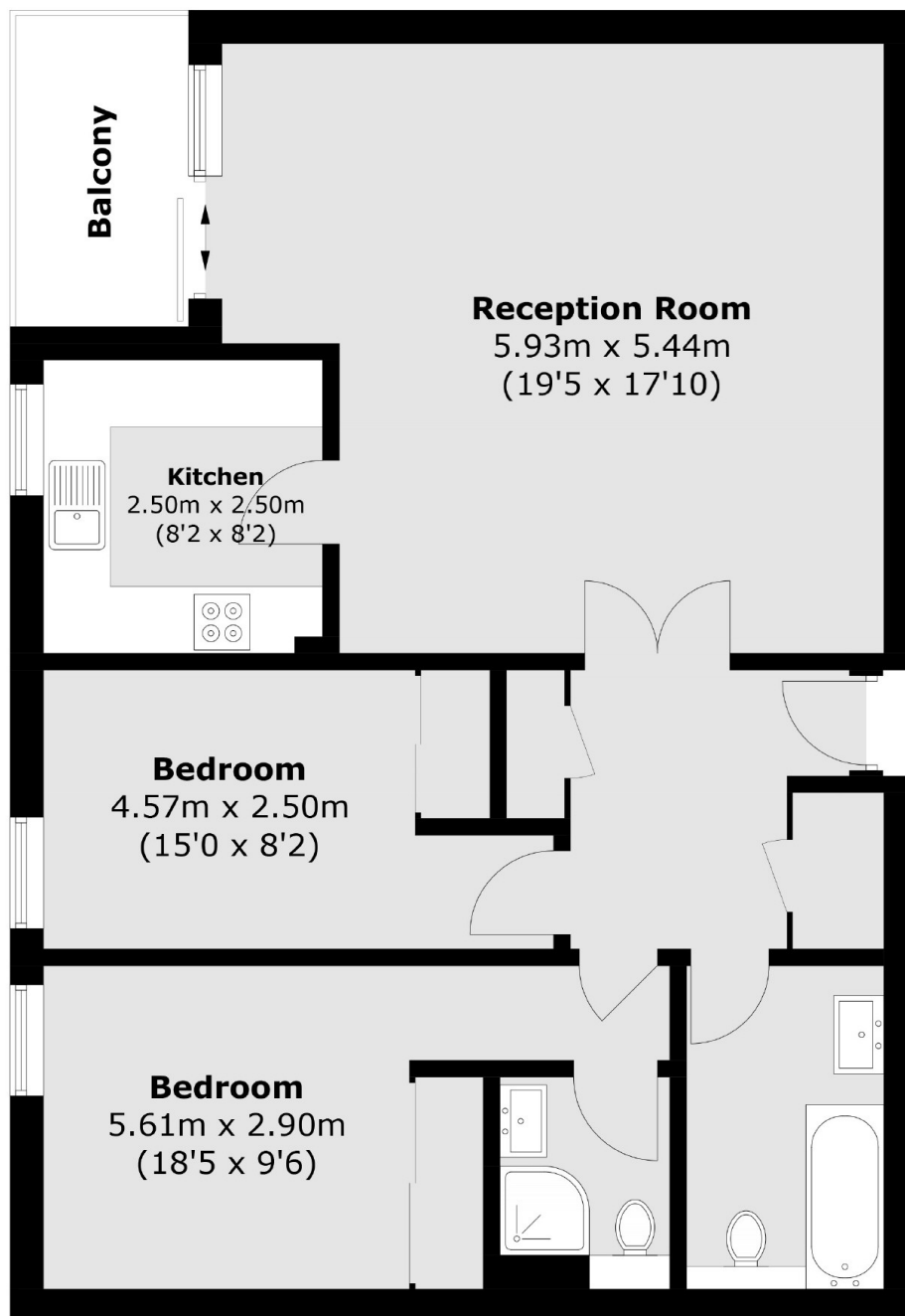
A spacious apartment located in a popular 24 hour portered development in the heart of The City. The property has two large double bedrooms, two bathrooms and a recently refurbished kitchen.

The apartment is ideally located with easy access to both the City and Canary Wharf with stations at Tower Hill, Aldgate and Wapping.

### Features

- Two Double Bedrooms
- 24 Hour Concierge
- Private Balcony
- Spacious
- Two Bathrooms
- Aldgate

# Hooper Street, London, E1



Total area (approx.): 79.5 sq. m (855.7 sq. ft)  
Balcony : 4.3 sq. m (46.3 sq. ft)

## Dexters

City  
5 Sandys Row  
London  
E17HW  
Lettings  
020 7392 9111

Energy Rating: E. We aim to make our particulars both accurate and reliable. However they are not guaranteed; nor do they form part of an offer or contract. If you require clarification on any points then please contact us, especially if you're traveling some distance to view. Please note that appliances and heating systems have not been tested and therefore no warranties can be given as to their good working order.

 **RICS** | Regulated  
Estate Agent  
and Letting Agent

[dexters.co.uk](https://www.dexters.co.uk)