

Leman Street, E1

£3,500 Per calendar month

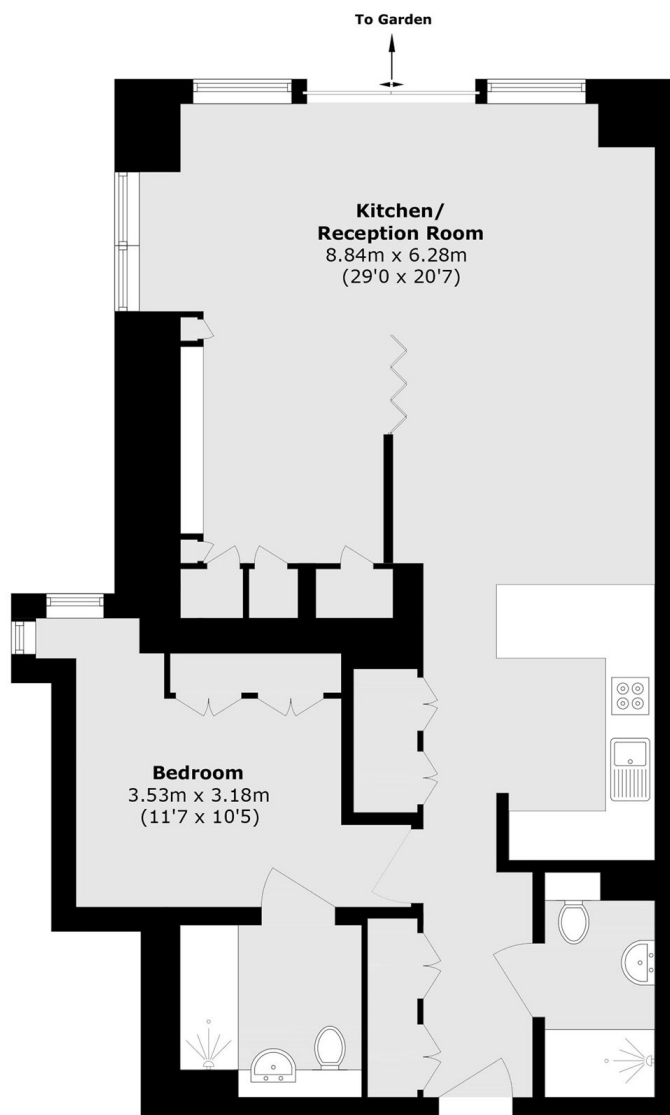
A bright and spacious two bedroom, two bathroom, modern apartment in Cashmere House, part of the Goodmans Fields development.

Positioned at the junction of Leman Street and Alie Street, the development is only a short stroll from Aldgate East station, offering excellent links into the City and beyond. A wide range of shops, cafés and everyday conveniences are also close at hand, making this an ideal location for urban living.

Features

- Two Bedrooms
- Two Bathrooms
- Concierge
- Gym
- Furnished
- Aldgate

Leman Street, London, E1



Total area (approx.): 78.2 sq. m (841.7 sq. ft)