



Leyden Street, E1

£2,900 Per calendar month

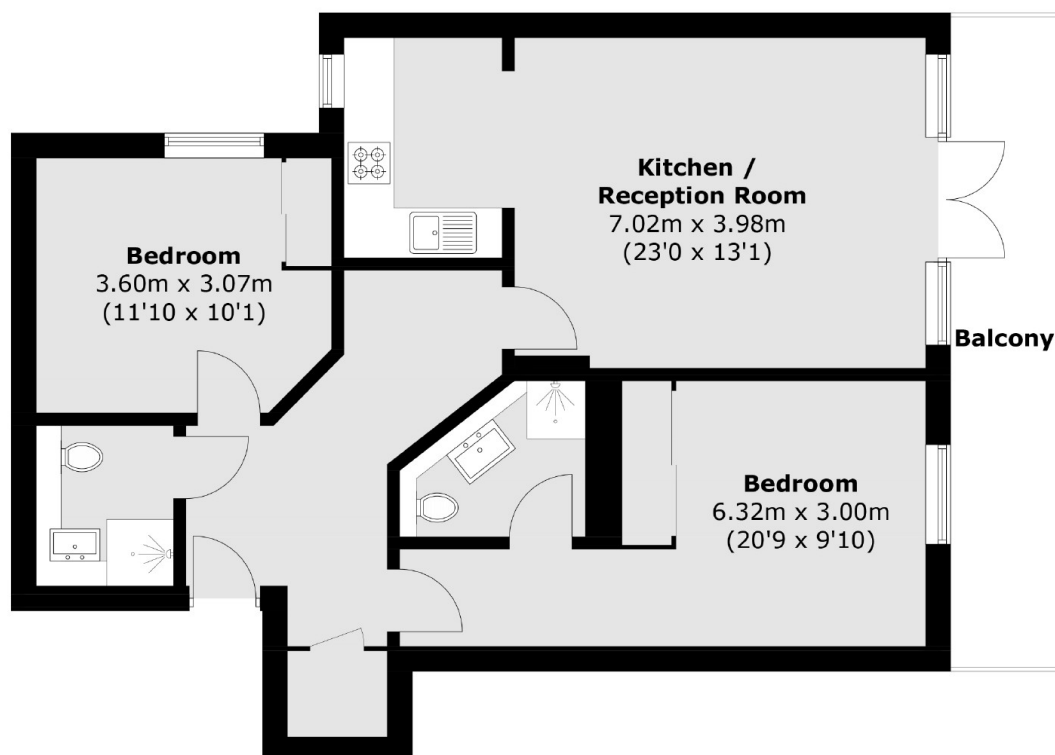
A perfectly located two double bedroom flat that is based in the heart of Spitalfields. The property has a great entertaining space with an open plan kitchen and a rustic style layout with a modern twist.

Leyden Street is moments away from Spitalfields market and Bishopsgate, so you are surrounded by the best shops, café, bars and restaurants in the City.

Features

- Two Double Bedrooms
- Two Bathrooms
- Day Time Porter
- Lift Access
- Close to transport
- Perfect City Property

Leyden Street, London, E1



Total area (approx.): 72.4 sq. m (779.3 sq. ft)
Balcony: 10.2 sq. m (109.8 sq. ft)