



Thrawl Street, E1

£3,550 Per calendar month

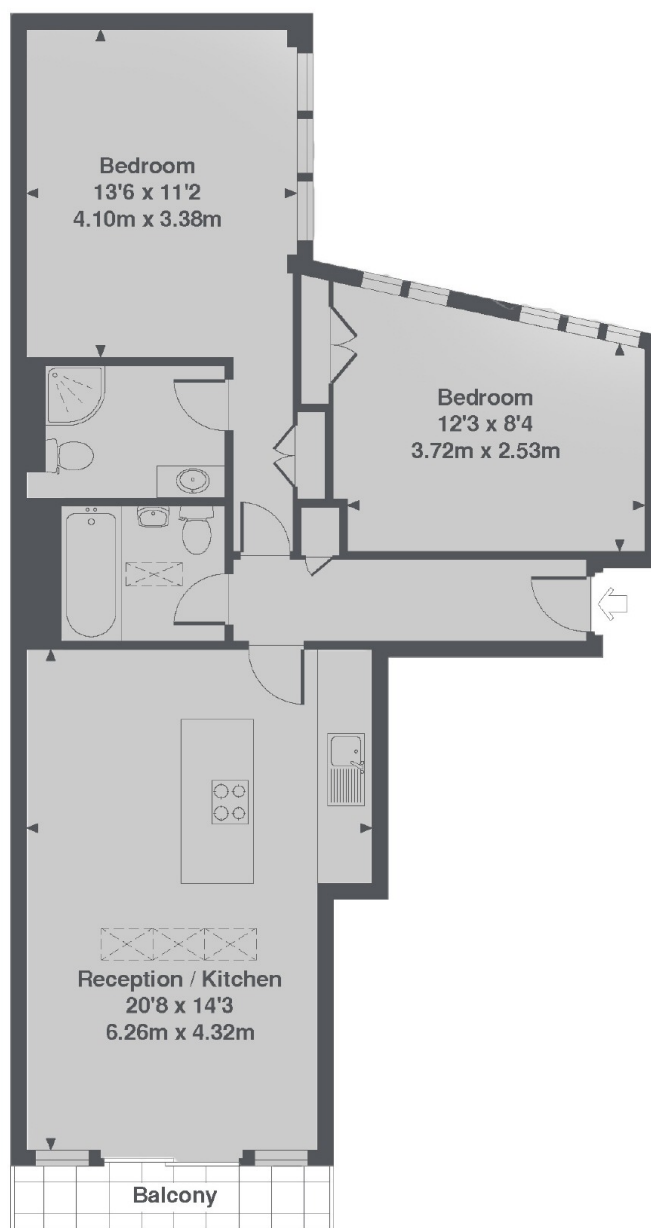
This two double bedroom apartment is full of natural light and has its own private balcony, which has amazing views of the City. The property is neutrally decorated throughout and would suit a single or professional couple.

Thrawl Street is close to Spitalfields Market. If you are a food lover, why not enjoy one of thirty stalls at lunchtime open every weekday with an array of international foods available.

Features

- Two Double Bedrooms
- Two Bathrooms
- Warehouse Conversion
- Private Balcony
- Wood Flooring
- Spitalfields Market

Thrawl Street, London, E1



4th Floor

Saxon House, Thrawl Street, E1
Total Approx. Floor area 733 Sq. Ft. (68.1 Sq. M.)

Dexters

City
5 Sandys Row
London
E17HW
Lettings
020 7392 9111

Energy Rating: C. We aim to make our particulars both accurate and reliable. However they are not guaranteed; nor do they form part of an offer or contract. If you require clarification on any points then please contact us, especially if you're traveling some distance to view. Please note that appliances and heating systems have not been tested and therefore no warranties can be given as to their good working order.

 **RICS** | Regulated
Estate Agent
and Letting Agent

[dexters.co.uk](https://www.dexters.co.uk)