



Water Lane, EC3R

£8,200 Per calendar month

A south facing, two double bedroom luxury apartment on the riverside of the prestigious Sugar Quay Development. With 24 hour concierge, swimming pool, gym and various areas to socialise, this property is the perfect property for busy professionals.

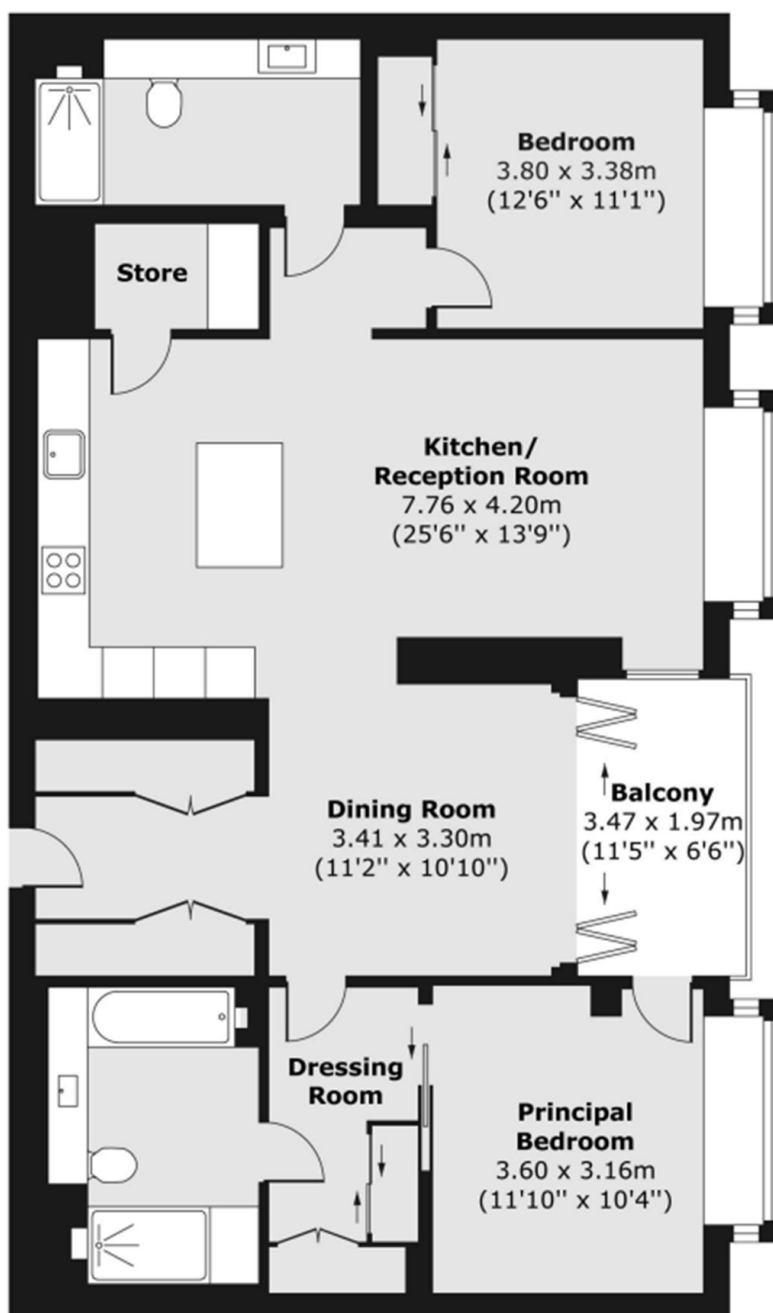
Sugar Quay is next to Tower of London and close to Monument and Tower Hill Underground Stations which are both just over a quarter mile away.

Features

- Two Double Bedrooms
- Two Bathrooms
- River Views
- Furnished
- Concierge
- Resident's Health Club

Water Lane, London, EC3R

First Floor



Total area (approx.) 105.62 sq. m (1,137 sq. ft)
Balcony area (approx.) 6.84 sq. m (74 sq. ft)