



## Barnsley Street, E1

£530 Per week

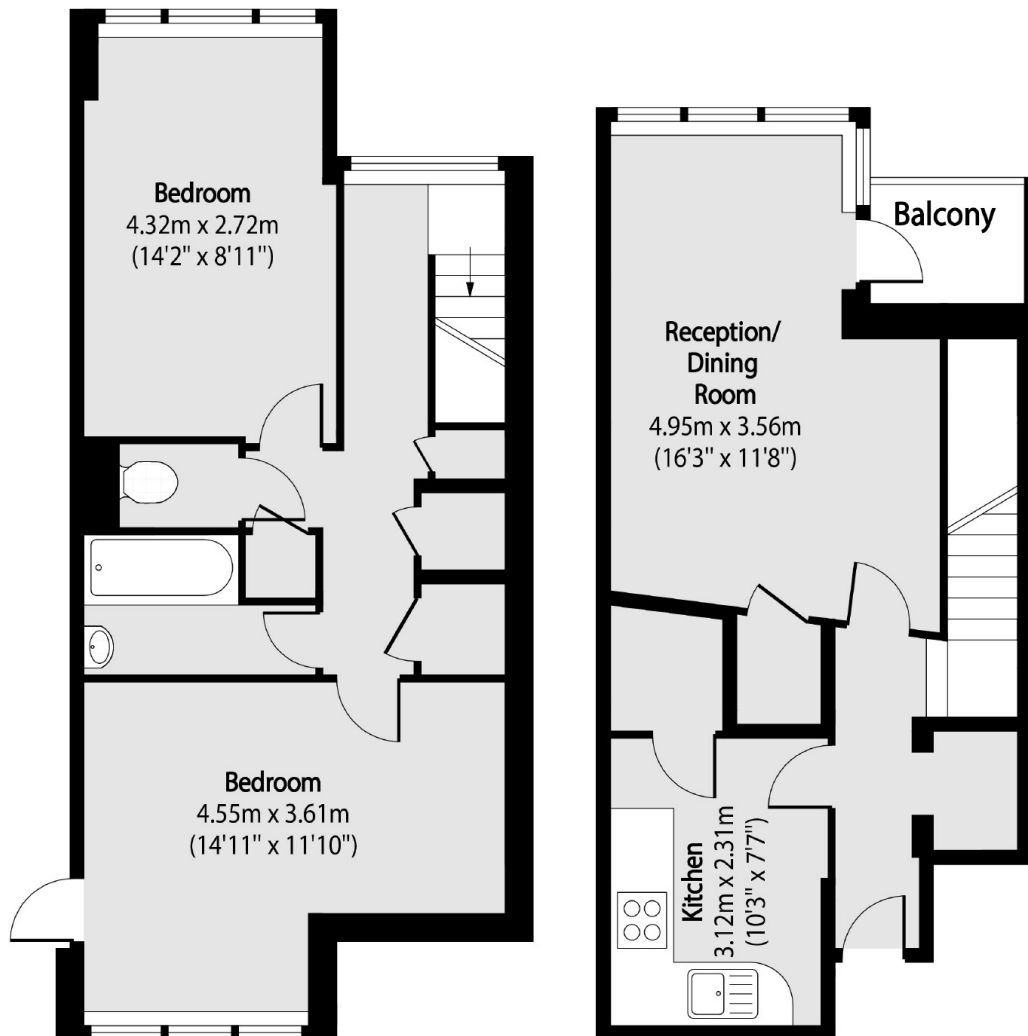
A 2 double bedroom split level apartment in the heart of Whitechapel. This property has new wooden floors throughout, it will be freshly re-painted before move in and has built in storage in both bedrooms.

Barnsley Street is situated between Bethnal Green Overground Station and Whitechapel Station, giving you easy access for commuting into the City and Canary Wharf.

### Features

Two Bedroom  
Split Level  
Balcony  
Unfurnished  
Seperate Kitchen  
Central Location

# Barnsley Street, London, E1



Third Floor

Fourth Floor

Total area (approx): 80.26 sq m (864 sq. ft)

Balcony total area (approx): 2.13 sq m (23 sq. ft)