



Harford Street, E1

£2,500 Per calendar month

A smart and stylish two double bedroom apartment with great views in modern condition available for let. Ideal for a single occupant a couple or two friends sharing.

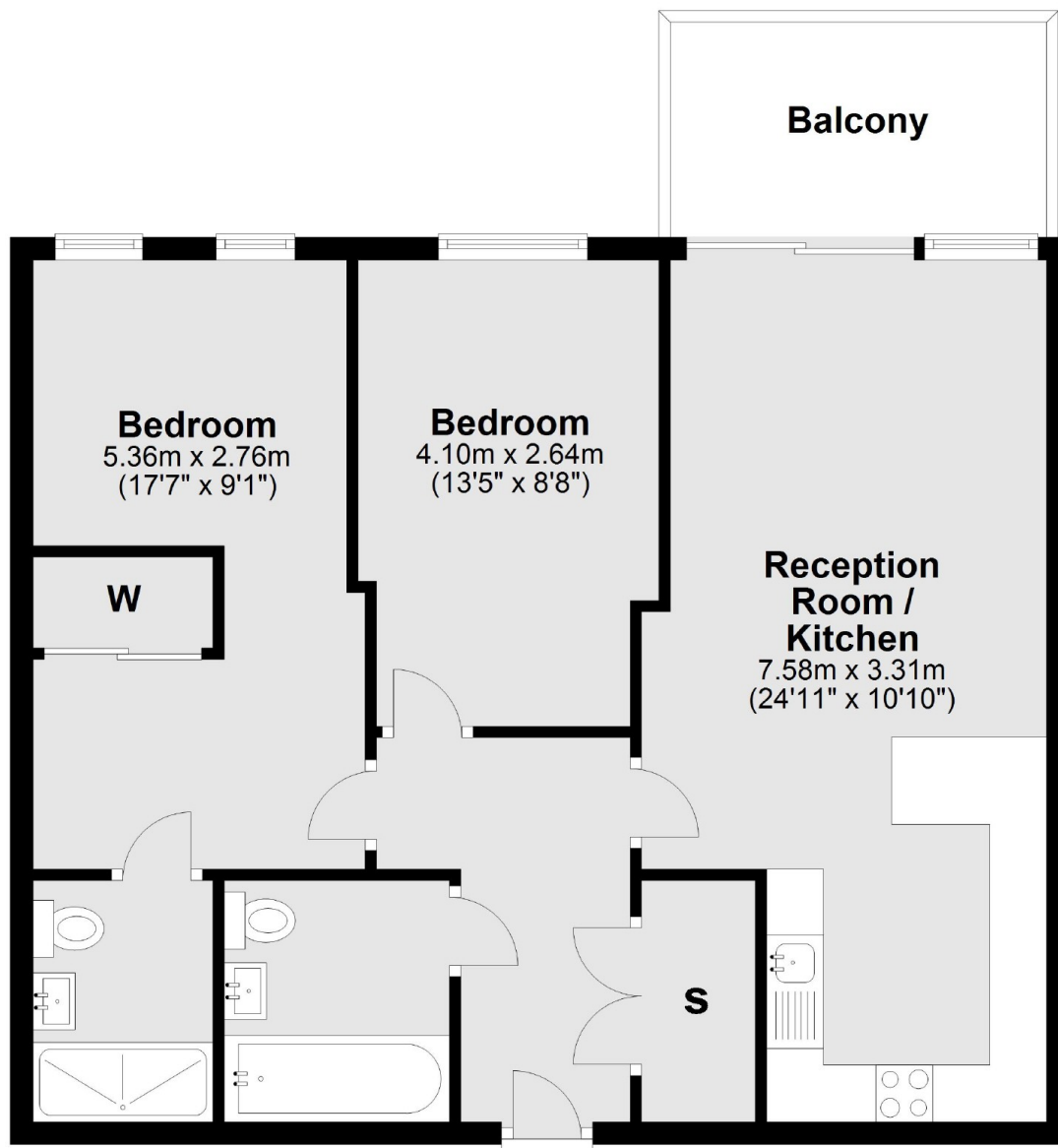
Graciosa House is well connected with excellent transport links. Whitechapel, Limehouse, Stepney Green are all nearby, providing easy access to the Elizabeth, District, Hammersmith & City, and Overground lines as well as the DLR.

Features

- Two Double Bedrooms
- Two Bathrooms
- Open Plan
- Wood Flooring
- Furnished
- Stepney Green

Harford Street,
London, E1

Fourth Floor



Total area: approx. 67.6 sq. metres (727.3 sq. feet)

Dexters

City
5 Sandys Row
London
E1 7HW
Lettings
020 7392 9111

Energy Rating: C. We aim to make our particulars both accurate and reliable. However they are not guaranteed; nor do they form part of an offer or contract. If you require clarification on any points then please contact us, especially if you're traveling some distance to view. Please note that appliances and heating systems have not been tested and therefore no warranties can be given as to their good working order.

 **RICS** | Regulated
Estate Agent
and Letting Agent

dexters.co.uk