



Thrawl Street, E1

£2,920 Per calendar month

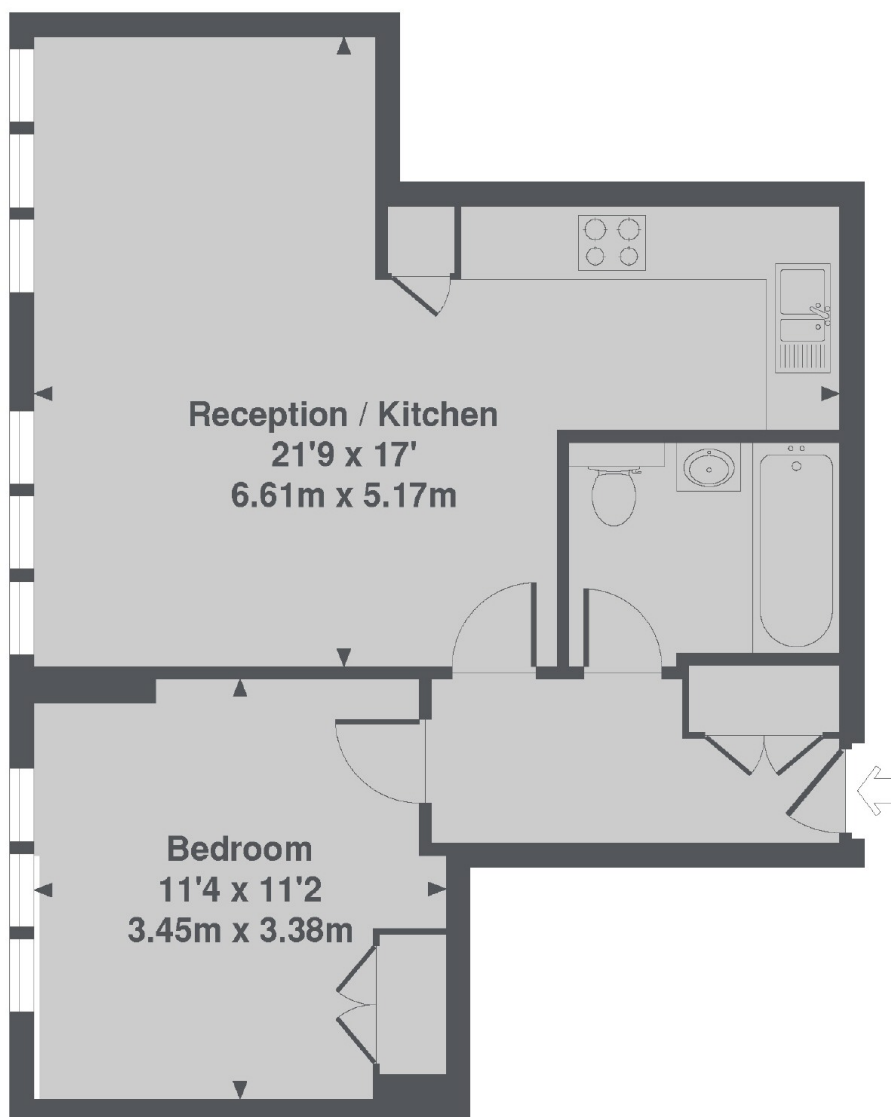
This one bedroom penthouse apartment is full of natural light and has its own private balcony, which has amazing views of the City. The property is neutrally decorated throughout and would suit a single or professional couple.

Thrawl Street is located moments away from Spitalfields market, winner of the 2007 Best New Open Space, Spitalfields also offers regular free events including film screenings, lunchtime concerts and cultural festivals.

Features

- One Double Bedroom
- Private Balcony
- Open Plan
- Central Location
- Furnished
- Spitalfields Market

Thrawl Street, London, E1



2nd Floor

Saxon House, Thrawl Street, E1
Total Approx. Floor area 490 Sq. Ft. (45.6 Sq. M.)

Dexters

City
5 Sandys Row
London
E1 7HW
Lettings
020 7392 9111

Energy Rating: C. We aim to make our particulars both accurate and reliable. However they are not guaranteed; nor do they form part of an offer or contract. If you require clarification on any points then please contact us, especially if you're traveling some distance to view. Please note that appliances and heating systems have not been tested and therefore no warranties can be given as to their good working order.

 **RICS** | Regulated
Estate Agent
and Letting Agent

[dexters.co.uk](https://www.dexters.co.uk)