



St. Thomas's Square, E9

£807 Per week

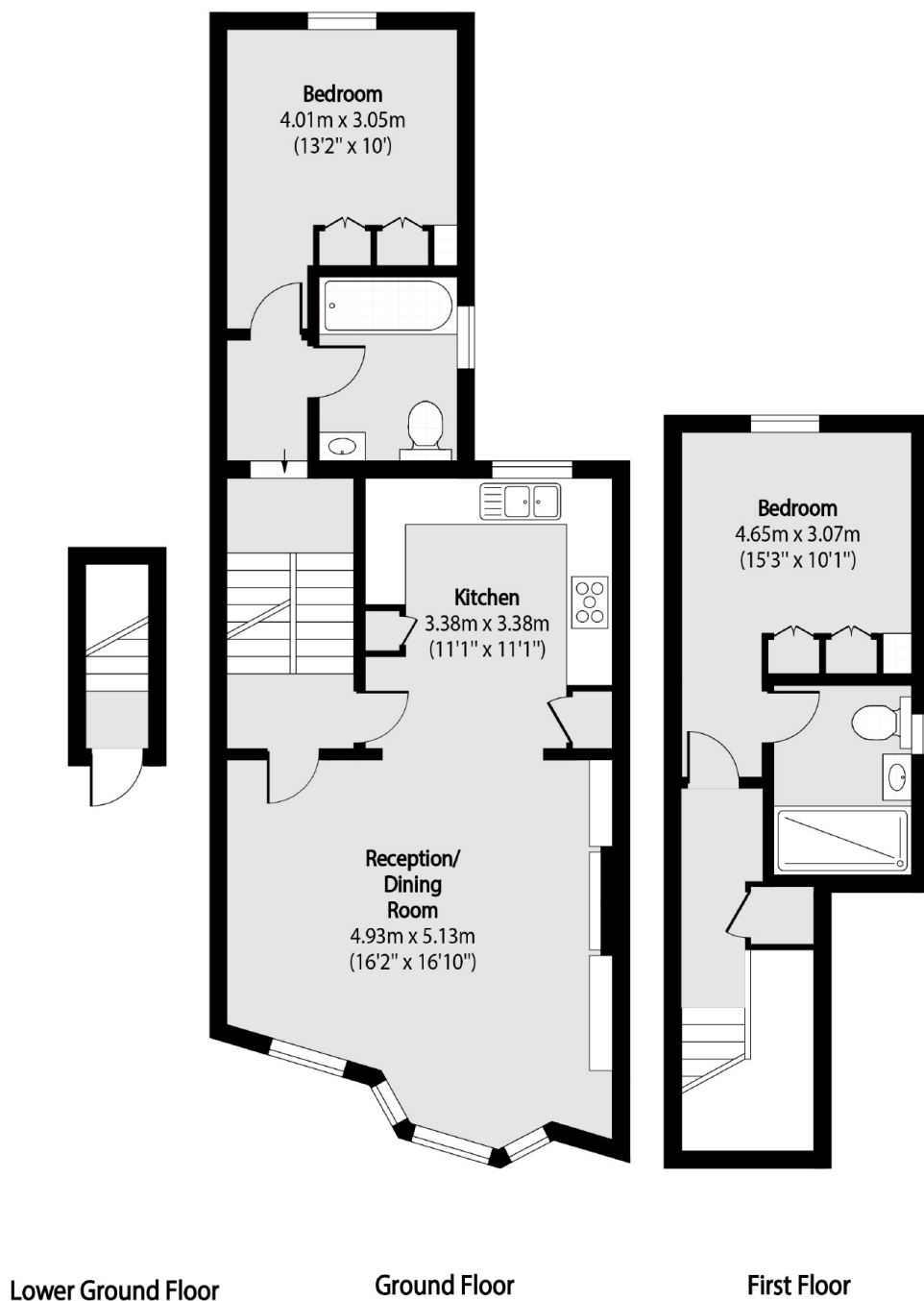
A two double bedroom maisonette in period conversion. This property has high ceilings throughout, open plan reception with bay windows which has been maintained to the high standards which comes furnished and parking if required.

Located on a picturesque square just off mare street this property has an plethora of shops, restaurants and cafés close by. The closest station is Hackney central with access to the City and North London.

Features

- Two Double Bedrooms
- Two Bathrooms
- Period Conversion
- Period Features
- High Ceilings
- Under Floor Heating

St. Thomas's Square, London, E9



Total area (approx): 82.86 sq m (892 sq. ft)

Dexters

Hackney
10 Broadway Market
London
E8 4QJ
Lettings
0207 247 2441

Energy Rating: D. We aim to make our particulars both accurate and reliable. However they are not guaranteed; nor do they form part of an offer or contract. If you require clarification on any points then please contact us, especially if you're traveling some distance to view. Please note that appliances and heating systems have not been tested and therefore no warranties can be given as to their good working order.

 **RICS** | Regulated
Estate Agent
and Letting Agent

[dexters.co.uk](https://www.dexters.co.uk)