



Ellingfort Road, E8

£750,000

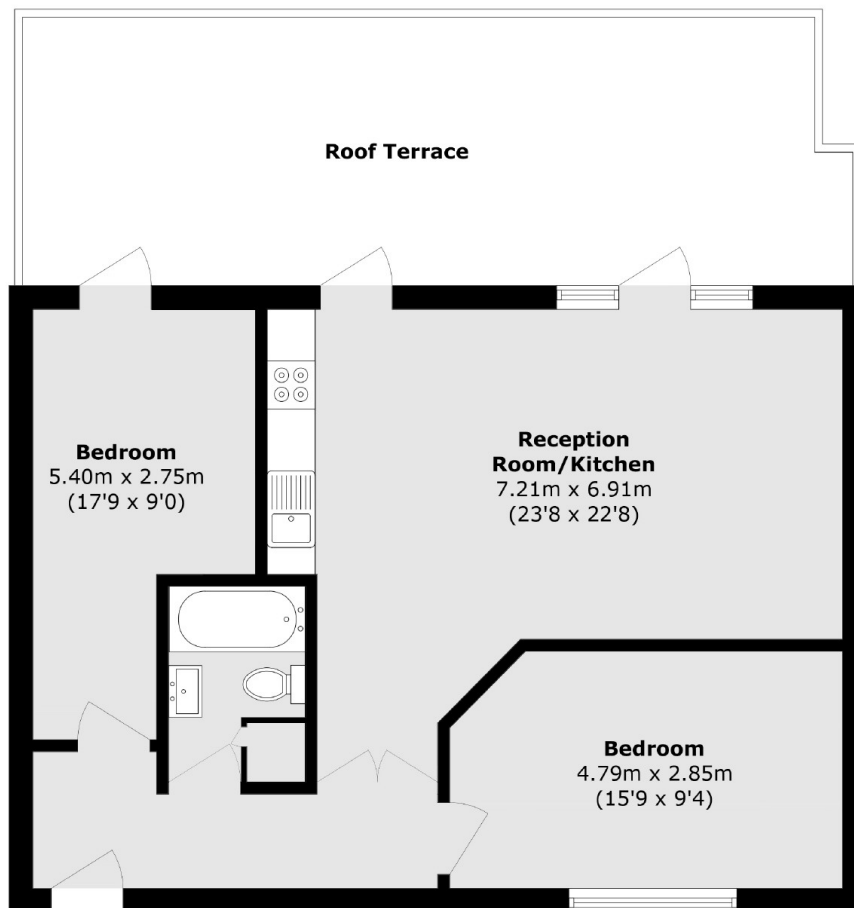
A two double bedroom second floor apartment located in the heart of London Fields. This property consists of open plan lounge kitchen with steel framed floor to ceiling windows and a tiled three piece bathroom suite. Externally the property also offers a large roof terrace with panoramic views of London fields and the city.

Hidden between the hustle and bustle of the boutique cafes and bars of Broadway Market and Hackney Central. Transport links include London Fields and Hackney Central stations which are both less than half a mile away for easy access to the City.

Features

- No Onward Chain
- Two Double Bedroom
- Floor to Ceiling Windows
- Roof Terrace
- Lift Access
- London Fields

Ellingfort Road, London, E8



Total area (approx.): 73.5 sq. m (791.1 sq. ft)
Terrace area (approx.): 34.1 sq. m (367.0 sq. ft)

Dexters

Hackney
10 Broadway Market
London
E8 4QJ
Sales
0207 247 2440

Energy Rating: C. We aim to make our particulars both accurate and reliable. However they are not guaranteed; nor do they form part of an offer or contract. If you require clarification on any points then please contact us, especially if you're traveling some distance to view. Please note that appliances and heating systems have not been tested and therefore no warranties can be given as to their good working order.

 **RICS** | Regulated
Estate Agent
and Letting Agent

[dexters.co.uk](https://www.dexters.co.uk)