



Bow Common Lane, E3

£680 Per week

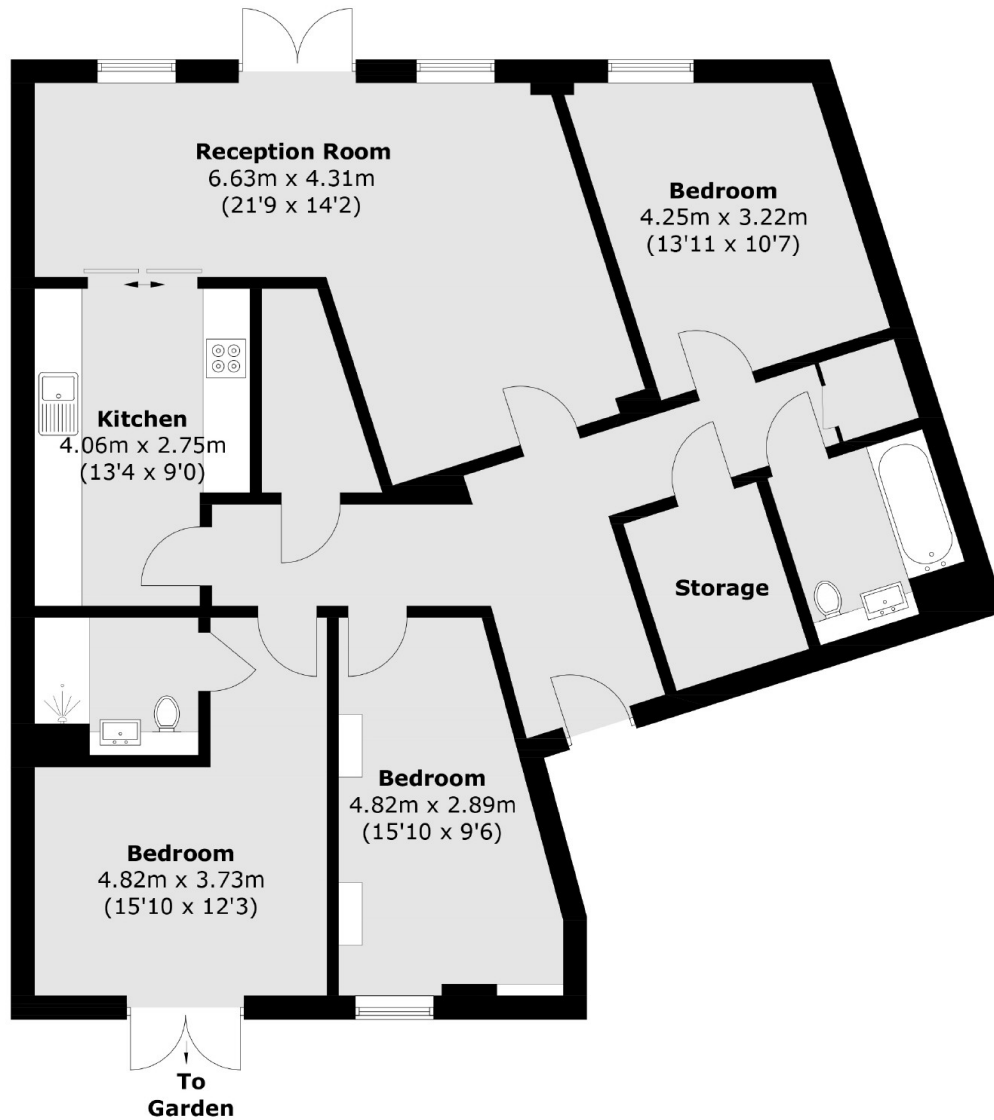
A stylish three double bedroom, two bath apartment in a modern development in Bow. This ground floor property has an open plan reception, floor to ceiling windows throughout, walk-in wardrobe and two private patio terraces which come furnished.

Located within easy reach of Mile End, the City and Canary Wharf. Within easy reach of all local cafés, shops and restaurants.

Features

- Three Double Bedroom
- Two Bathroom
- Walk-in Wardrobe
- Two Private Terraces
- Wooden flooring
- Furnished

Bow Common Lane, London, E3



Total area (approx.): 110.8 sq. m (1,192.6 sq. ft)