



Gibbs Lane, E2

£634 Per week

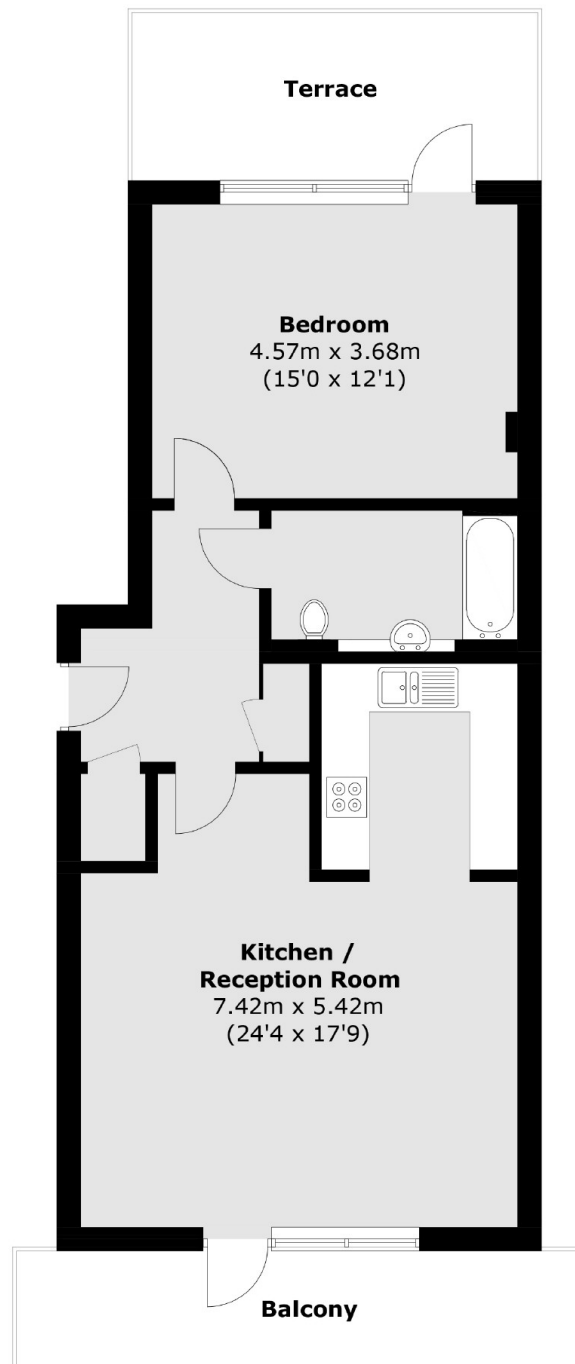
A stunning one double bedroom apartment with two large private balconies in the new Mettle & Poise development. Featuring underfloor heating, spotlighting, wooden flooring and floor to ceiling windows throughout which comes unfurnished.

Goldsmith Row is adjacent to Hackney City Farm on Hackney Road, with Jesus Green's Columbia Road flower market on a Sunday and Broadway Market within walking distance.

Features

- One Double Bedroom
- Floor to Ceiling Windows
- Open Plan
- Wooden flooring
- Two Private Balconies
- Unfurnished

Gibbs Lane,
London, E2



Total area (approx.): 65.5 sq. m (705.0 sq. ft)
Terrace / Balcony: 20.9 sq. m (225.0 sq. ft)

Dexters

Hackney
10 Broadway Market
London
E8 4QJ
Lettings
0207 247 2441

Energy Rating: C. We aim to make our particulars both accurate and reliable. However they are not guaranteed; nor do they form part of an offer or contract. If you require clarification on any points then please contact us, especially if you're traveling some distance to view. Please note that appliances and heating systems have not been tested and therefore no warranties can be given as to their good working order.

 **RICS** | Regulated
Estate Agent
and Letting Agent

[dexters.co.uk](https://www.dexters.co.uk)