



Derwent Walk, E9
£1,150,000

Dexters



Derwent Walk, E9

A contemporary three double bedroom, two bathroom, three storey mews style house set over 1,208 Sqft, retaining a link to the architecture of the past with the use of London Stock Brick.

This property has heritage wood flooring on the ground floor, panelled walls and retractable roof. There is a newly refurbished open plan designer kitchen, gas hob and marble worktops that complement the contemporary interior design. This floor also has under stair storage and a WC.

The First floor has two double bedrooms, one of the bedrooms has two sets of double doors that open onto Juliette balconies and both come with plush carpet. This level has a modern family bathroom.

The top floor comprises of a large double bedroom with en suit, walk in wardrobe and floor to ceiling sliding doors that open onto the private terrace.

Derwent Walk is located in the heart of Victoria Park Village, close to the independent shops and eateries and the 213 acre park. Transport includes 24 hour bus routes nearby and access to the city via London Fields & Cambridge Heath Overground.

Features

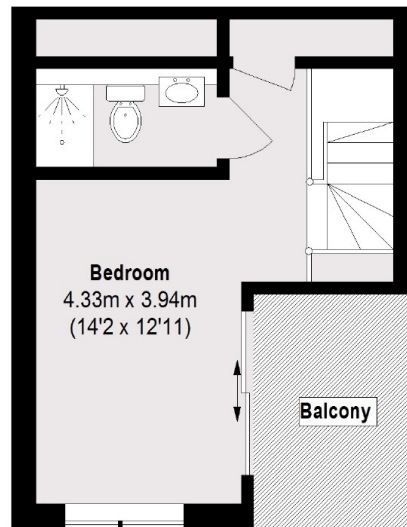
- Three Double Bedrooms
- Two Bathrooms
- Roof Terrace
- Gated Mews House
- Open Plan Living
- Freehold



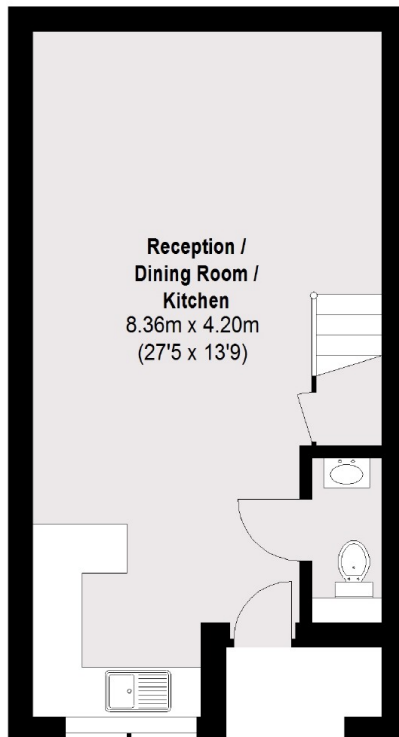




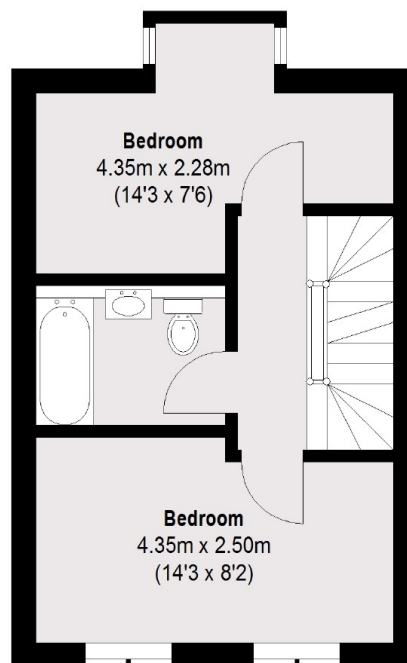
Derwent Walk, London, E9



Second Floor



Ground Floor



First Floor

Total area (approx.): 112.28 sq. m (1208 Sq. ft)
Balcony: 5.70 sq. m (61 Sq. ft)

Dexters

Hackney
10 Broadway Market
London
E8 4QJ
Sales
0207 247 2440

Energy Rating: B. We aim to make our particulars both accurate and reliable. However they are not guaranteed; nor do they form part of an offer or contract. If you require clarification on any points then please contact us, especially if you're traveling some distance to view. Please note that appliances and heating systems have not been tested and therefore no warranties can be given as to their good working order.

 **RICS** | Regulated
Estate Agent
and Letting Agent

dexters.co.uk