



Vyner Street, E2

£775,000

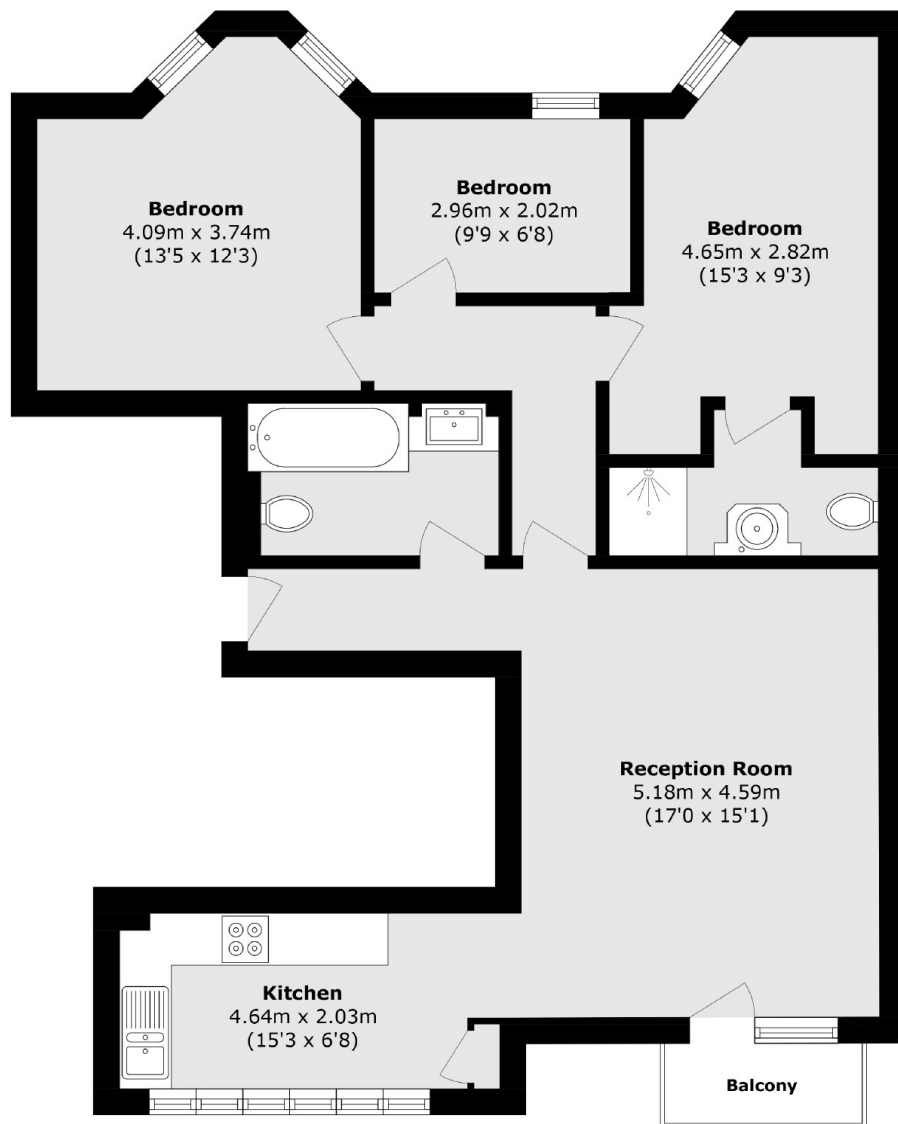
A three double-bedroom flat set within the old Burberry trench coat factory. Measuring over 850 sq ft, the property offers a semi-open plan living area which leads onto a private balcony and kitchen, overlooking the street, and a large family bathroom. To the back of the apartment are three double bedrooms, one complete with an ensuite.

Down a quiet but lively side street, with recently opened wine bars and artist spaces, Vyner Street offers a great community feel and is moments from Victoria Park and London Fields for green spaces, restaurants and bars. Both Bethnal Green underground and London Fields overground are 0.6 miles making it very well connected.

Features

- Warehouse Conversion
- Three Double Bedrooms
- London Fields
- Victoria Park
- Private Balcony
- Two Bathrooms

Vyner Street,
London, E2



Total area (approx.): 82.3 sq. m (885.8 sq. ft)

Balcony area (approx.): 2.1 sq. m (22.6 sq. ft)

Dexters

Hackney
10 Broadway Market
London
E8 4QJ
Sales
0207 247 2440

Energy Rating: C. We aim to make our particulars both accurate and reliable. However they are not guaranteed; nor do they form part of an offer or contract. If you require clarification on any points then please contact us, especially if you're traveling some distance to view. Please note that appliances and heating systems have not been tested and therefore no warranties can be given as to their good working order.

 **RICS** | Regulated
Estate Agent
and Letting Agent

[dexters.co.uk](https://www.dexters.co.uk)