



## Mare Street, E8

£865 Per week

Cyntra Place is a converted clock factory, with a collection of modern apartments set within a gated mews. This unique warehouse style property has a large open plan living area, with exposed brickwork and hardwood floors throughout.

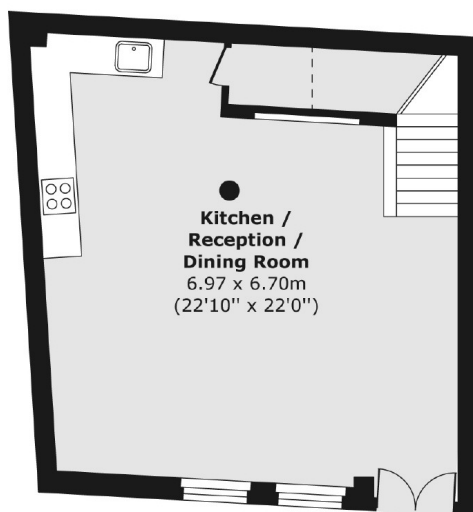
In one of East London's most vibrant corners with Broadway Market, London Fields and Victoria Park all less than half a mile away and London Fields overground station close by.

### Features

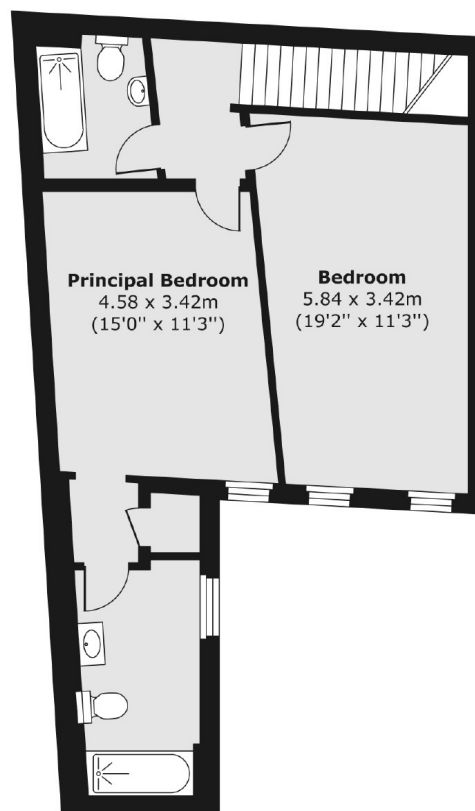
- Two Double Bedrooms
- Two Bathroom
- Converted Clock Factory
- Gated Mews
- Exposed Brickwork
- Duplex

# Mare Street, London, E8

Ground Floor



First Floor



Total area (approx.) 98.66 sq. m (1,062 sq. ft)

## Dexters

Hackney  
10 Broadway Market  
London  
E8 4QJ  
Lettings  
0207 247 2441

Energy Rating: D. We aim to make our particulars both accurate and reliable. However they are not guaranteed; nor do they form part of an offer or contract. If you require clarification on any points then please contact us, especially if you're traveling some distance to view. Please note that appliances and heating systems have not been tested and therefore no warranties can be given as to their good working order.

 **RICS** | Regulated  
Estate Agent  
and Letting Agent

[dexters.co.uk](https://www.dexters.co.uk)