



Schoolbell Mews, E3

£700,000

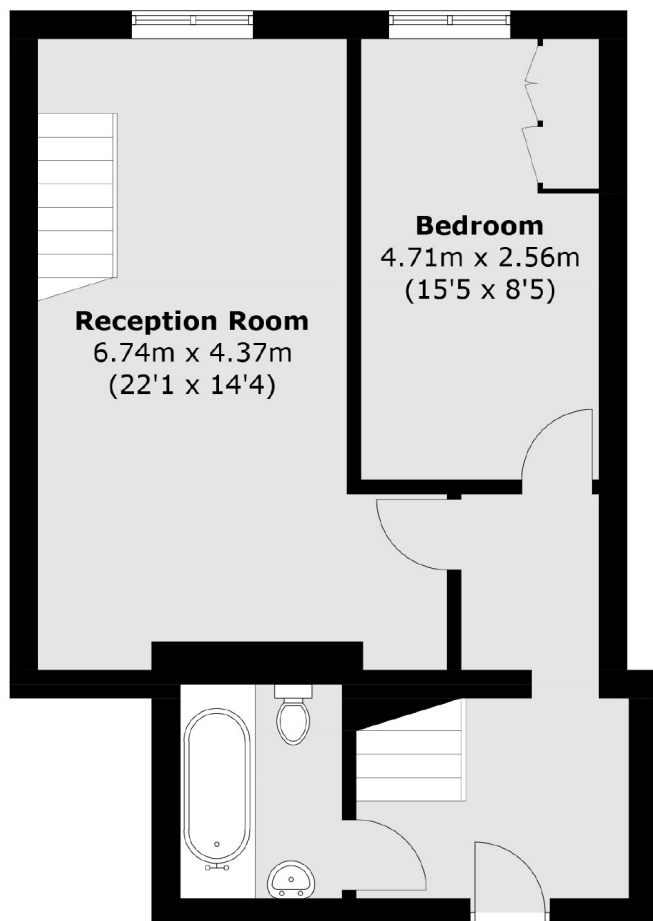
A two double bedroom apartment located within a victorian school conversion in the heart of the Medway conservation area. This property is steeped in history and maintains many of the original features, including large windows, high ceilings, exposed beams and original wooden flooring.

Located under a quarter of a mile from Victoria Park with local shops and restaurants close by, this property also benefits from being walking distance to the Regents Canal and the Olympic Park, Stratford, with well-connected Mile End tube station just a short 10-minute walk away.

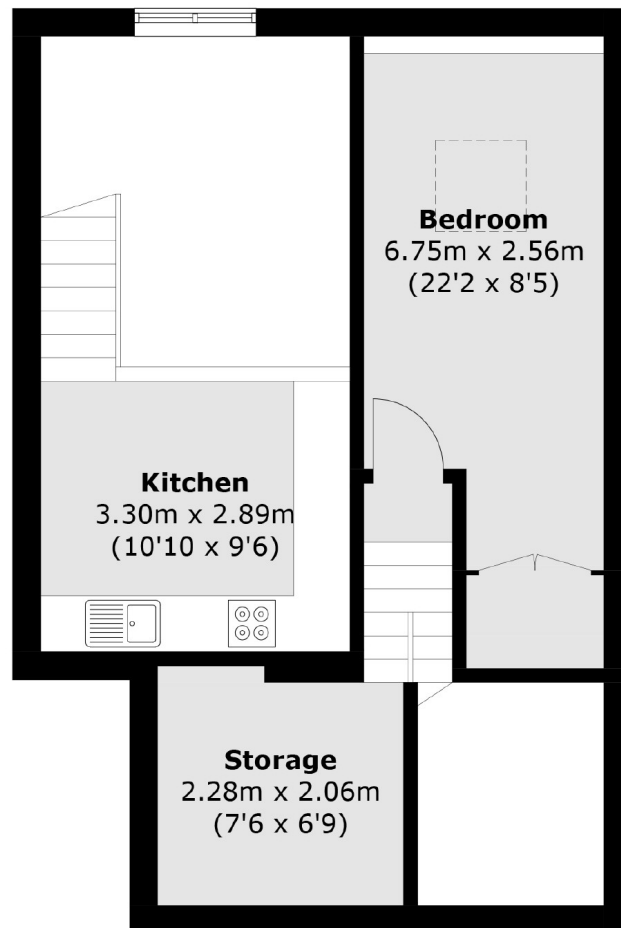
Features

- Two Double Bedrooms
- Mezzanine Kitchen
- High Ceilings
- Wooden Flooring
- School Conversion
- Character

Schoolbell Mews, London, E3



Ground Floor



First Floor

Total area (approx.): 88.0 sq. m (947.2 sq. ft)
(Excluding Void)