



Terrace Road, E9

£1,250,000

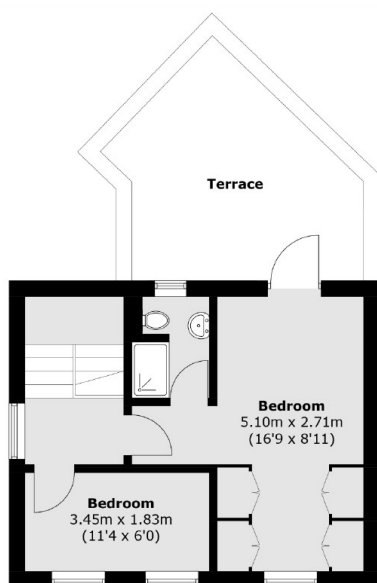
A four bedroom semi detached home with a private courtyard garden and a south facing roof terrace. The property is split over three floors with a connected garage.

Situated between Victoria Park and London Fields, the property is a short stroll from the local amenities of Victoria Park Village and endless transports links including London Fields and Homerton Station; with ample green areas close by, this is an idyllic location with a country in the city feel.

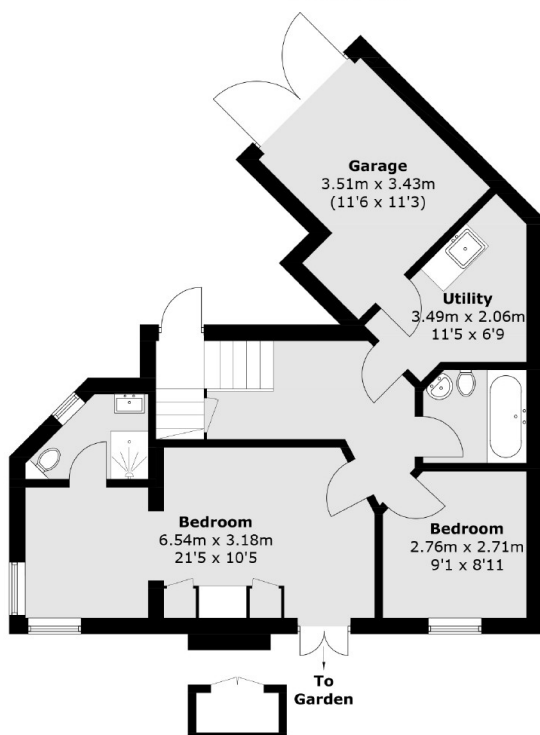
Features

Offers In Excess Of
Potential to Extend
Patio Garden
Connected Garage
Roof Terrace
Victoria Park Village
London Fields

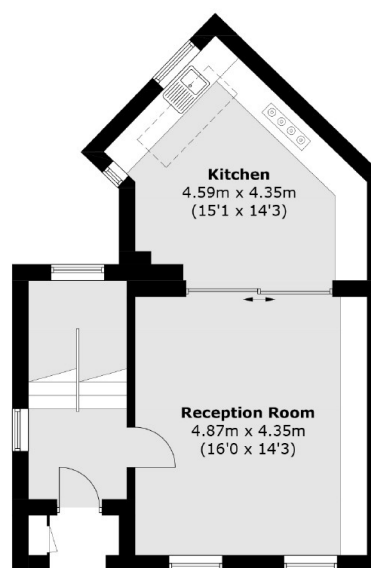
Terrace Road, London, E9



First Floor



Lower Ground Floor



Ground Floor

Total area (approx.): 141.2 sq. m (1,519.8 sq. ft)
(Including Garage)

Terrace area (approx.): 15.2 sq. m (163.6 sq. ft)