



Marian Place, E2

£807 Per week

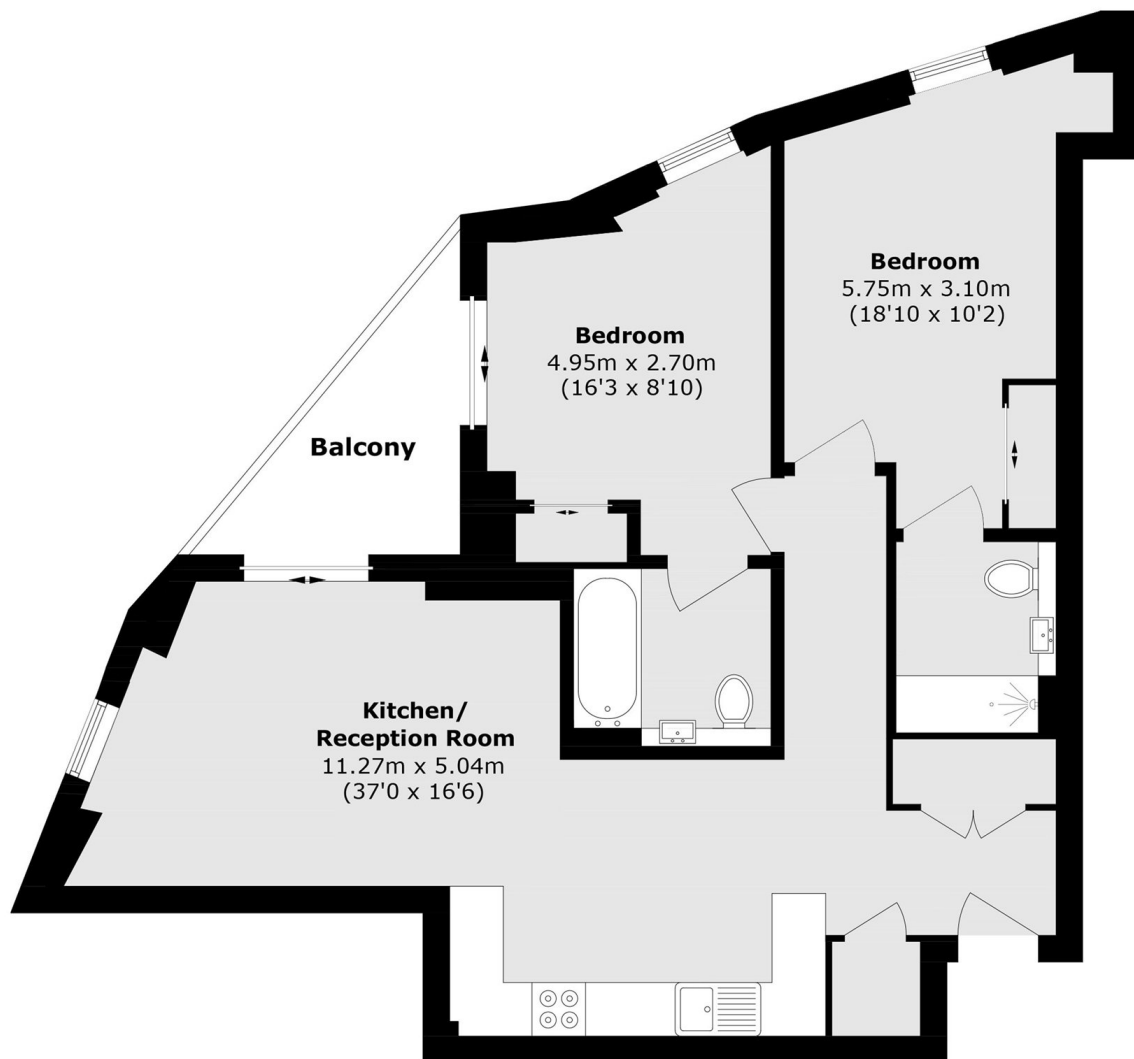
A BRAND NEW two double bedroom apartment that has been finished to the highest of standards and offers generous dimensions throughout. The open-plan reception room and kitchen offers a perfect entertaining space which can be furnished or unfurnished.

Located on Regent Canal and around the corner from Broadway Market. Stanton Walk is in one of the most exciting areas in East London, with an abundance of local amenities and London Fields Park nearby.

Features

- Two Double Bedroom
- Two Bathroom
- Underfloor Heating Throughout
- Screening Room
- Spa Facilities
- Concierge

Marian Place, LONDON, E2



Total area (approx.): 77.7 sq. m (836.3 sq. ft)

Balcony area (approx.): 6.4 sq. m (68.8 sq. ft)