



## Chatham Place, E9

£625,000

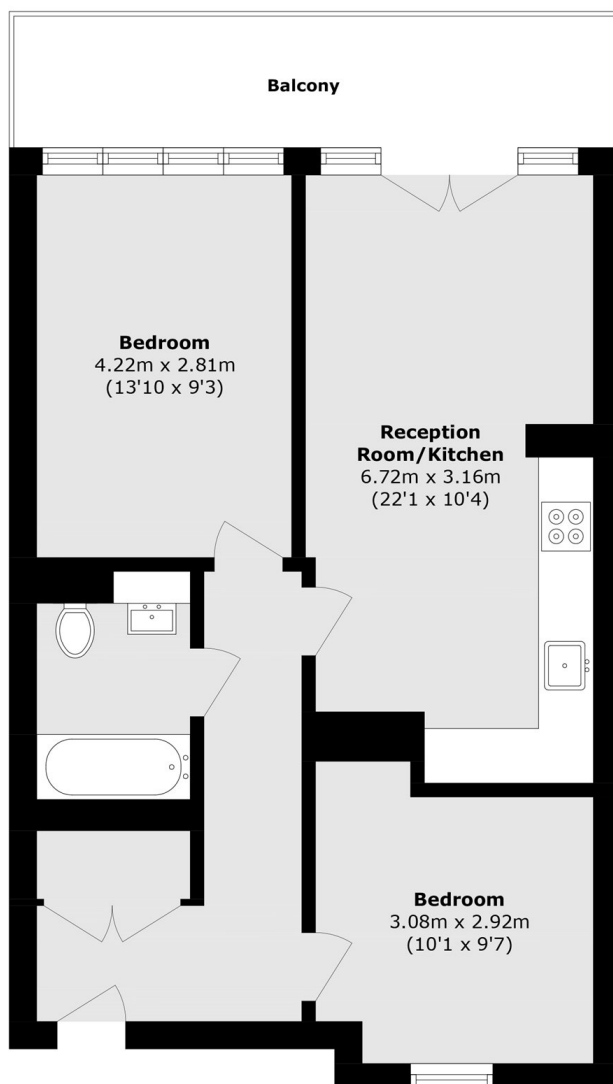
Based in a converted clothing factory, this bright modernised two bedroom apartment benefits from original features such as high ceilings, exposed brickwork, crittal windows, wooden flooring throughout, underfloor heating and a private balcony.

The popular Textile Building development is ideally located within walking distance of Hackney Central, Hackney Downs and Homerton Stations and is situated nearby green spaces such as London Fields and Victoria Park. The surrounding area also consists of endless bars, eateries, supermarkets and schools.

### Features

- Chain Free
- Converted Clothing Factory
- Two Bedrooms
- Private Balcony
- Crittal Windows
- Concierge

# Chatham Place, London, E9



Total area (approx.): 57.6 sq. m (620.0 sq. ft)

Balcony area (approx.): 9.1 sq. m (97.9 sq. ft)