



High Street, E15

£542 Per week

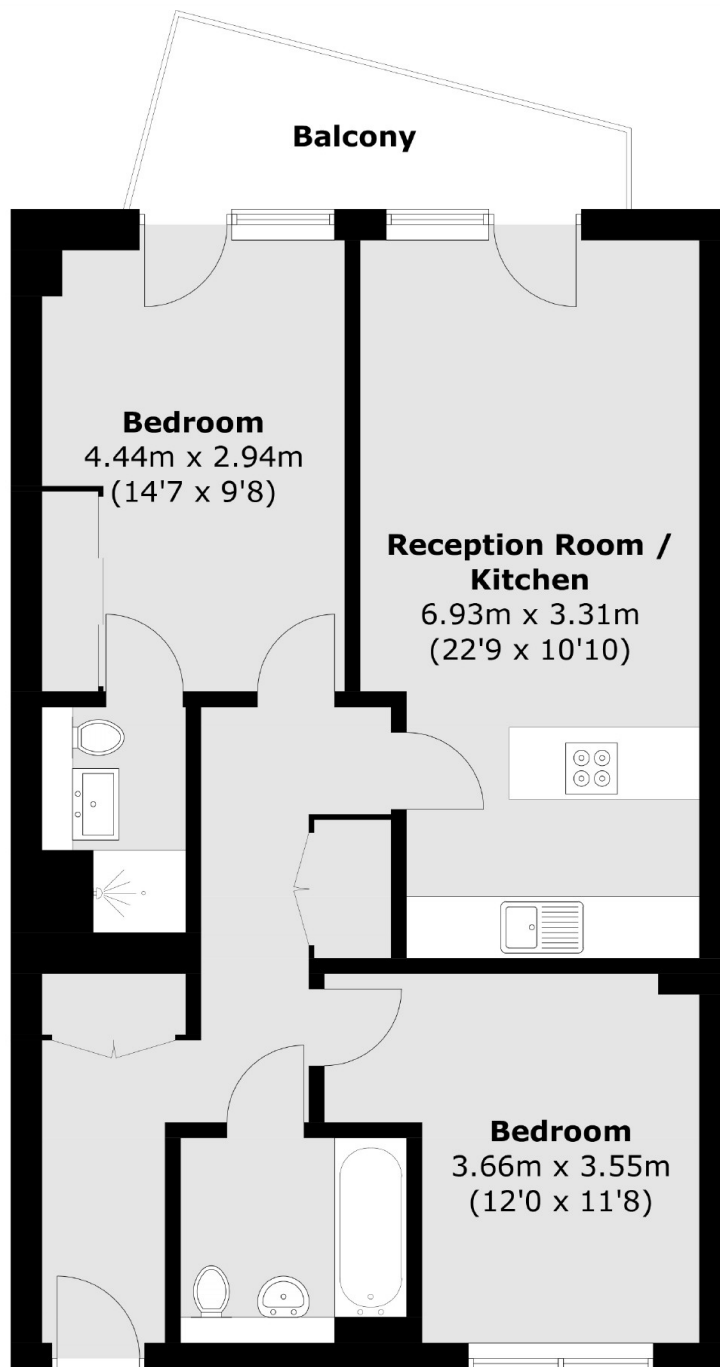
A large two double bedroom, two bath apartment in Thomas Frye Court. This property comes with an open plan reception, floor to ceiling windows and large private balcony overlooking the canal situated on the 4th floor.

Amazing location close to Westfield Shopping Centre and Stratford international station.

Features

- Two Double Bedroom
- Two Bathroom
- Wooden Flooring
- Canal Views
- concierge
- Private Balcony

High Street,
London, E15



Total area (approx.): 69.2 sq. m (744.9 sq. ft)
Balcony area (approx.): 6.2 sq. m (66.7 sq. ft)

Dexters

Hackney
10 Broadway Market
London
E8 4QJ
Lettings
0207 247 2441

Energy Rating: B. We aim to make our particulars both accurate and reliable. However they are not guaranteed; nor do they form part of an offer or contract. If you require clarification on any points then please contact us, especially if you're traveling some distance to view. Please note that appliances and heating systems have not been tested and therefore no warranties can be given as to their good working order.

 **RICS** | Regulated
Estate Agent
and Letting Agent

[dexters.co.uk](https://www.dexters.co.uk)