



Roach Road, E3

£600 Per week

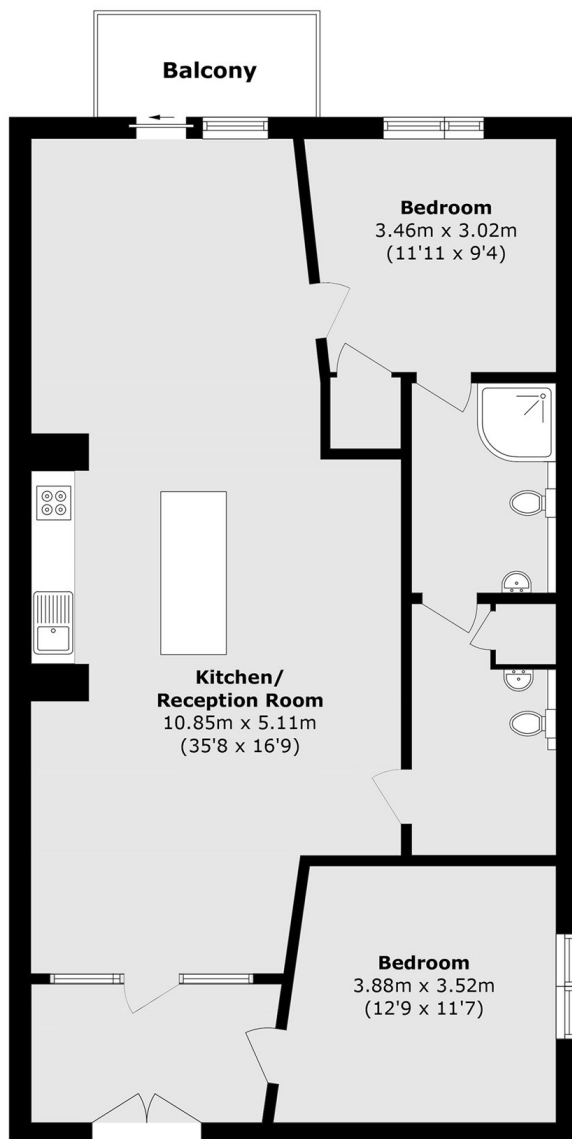
A two double bedroom apartment that measures in excess of 1000 square foot. Located within a secure development, this property offers an open plan living over looking the canal with a private balcony. The property comes furnished.

Omega works is situated on the corner of the Hertford Union Canal and the Lea Canal in the Hackney Wick area. This property has an abundance of Popular eateries, cafés and bars on its doorstep.

Features

- Two Double Bedrooms
- Over 1000 Sqft
- Open Plan
- Private Balcony
- Wooden flooring throughout
- Canal Views

Roach Road, London, E3



Total area (approx.): 97.2 sq. m (1046.3 sq. ft)

Balcony Total (approx.): 4.2 sq. m (45.2 sq. ft)