



## Morville Street, E3

£600 Per week

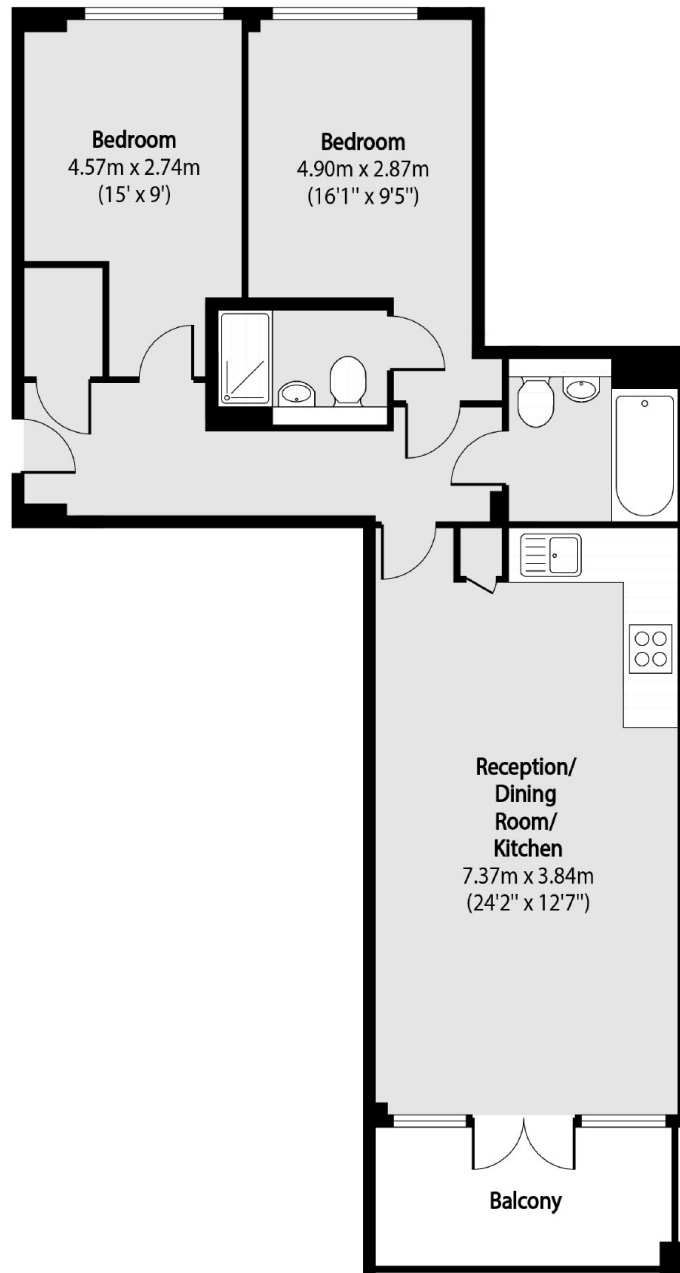
A large two double bedroom, two bathroom apartment in the new Morville street development. This property has two equally sized double bedrooms, an open plan reception, private balcony and wooden flooring throughout with a communal roof terrace.

Amazing location close to Bow Road Station, Mile End, Victoria Park and Stratford for all local shops, bars and restaurants.

### Features

- Two Double Bedroom
- Two Bathroom
- Open Plan
- Wooden Flooring
- Communal Roof Terrace
- Private Balcony

# Morville Street, London, E3



Total area (approx): 68.56 sq m (738 sq. ft)

Balcony total area (approx): 6.41 sq m (69 sq. ft)

## Dexters

Hackney  
10 Broadway Market  
London  
E8 4QJ  
Lettings  
0207 247 2441

Energy Rating: B. We aim to make our particulars both accurate and reliable. However they are not guaranteed; nor do they form part of an offer or contract. If you require clarification on any points then please contact us, especially if you're traveling some distance to view. Please note that appliances and heating systems have not been tested and therefore no warranties can be given as to their good working order.

 **RICS** | Regulated  
Estate Agent  
and Letting Agent

[dexters.co.uk](https://dexters.co.uk)